

HLanData

HARMONIZATION OF EUROPEAN
LAND USE AND LAND COVER DATABASES
FOR THE CREATION OF VALUE ADDED SERVICES



CEIT ALANOVA
Institute of Urbanism,
Transport, Environment
and Information Society

Creation of value-added services based on Harmonized Land Use and Land Cover Datasets

CEIT ALANOVA

Institute of Urbanism, Transport, Environment and Information Society
Schwechat/AT

CENTRAL EUROPEAN INSTITUTE OF TECHNOLOGY

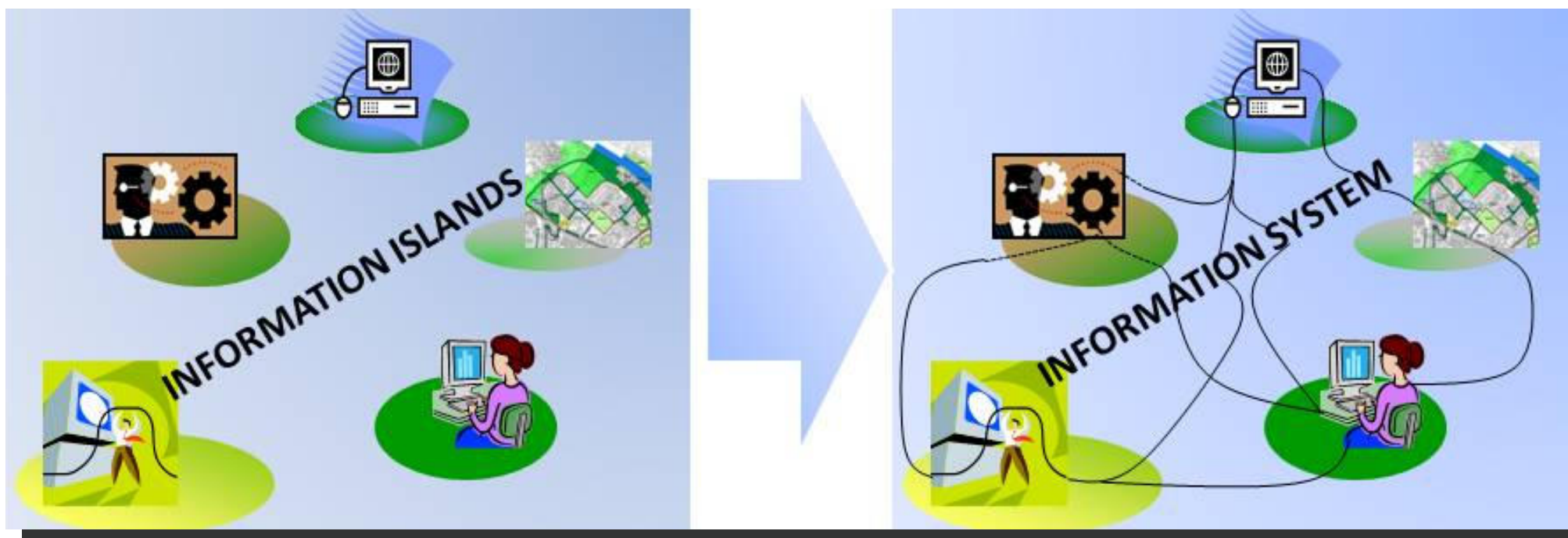
Institute of Urbanism, Transport, Environment and Information Society

- Applied Research
- Planners, Geographers, Architects and Technicians
- Urban, Environmental and Transport Technologies
- Information Society
- Sustainability and Resource Management
- Urban Planning and Regional Development
- Geographic Information Technologies
- Spatial Scientific Management, GIS



Member of
**European
Network of
Living Labs**





INSPIRE Directive

Infrastructure for Spatial Information
in the European Community

<http://inspire.jrc.ec.europa.eu/>



Harmonization of European Land Use & Land Cover datasets

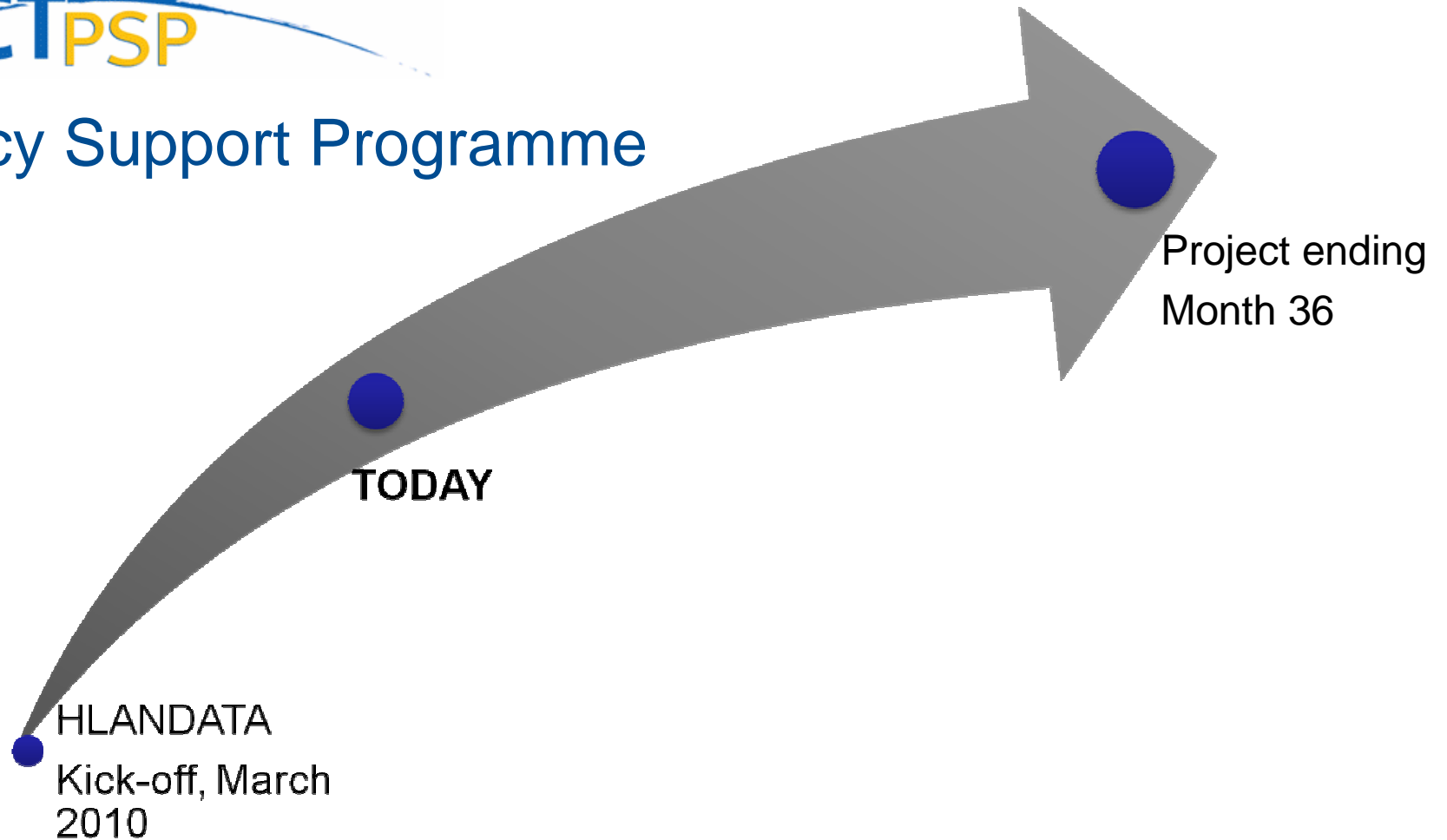
Implementation of INSPIRE

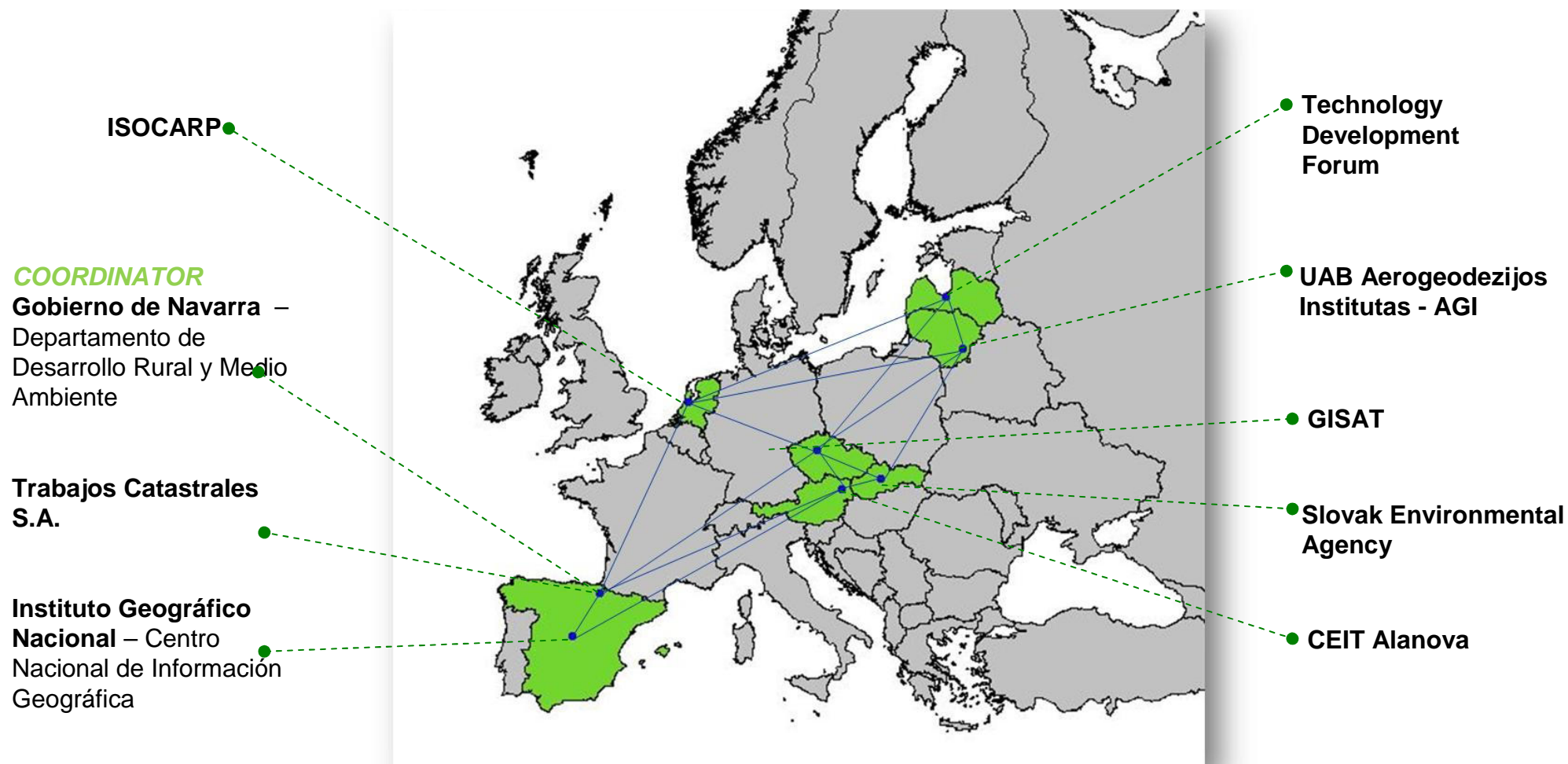
Implementation of PILOTS (value-added services)

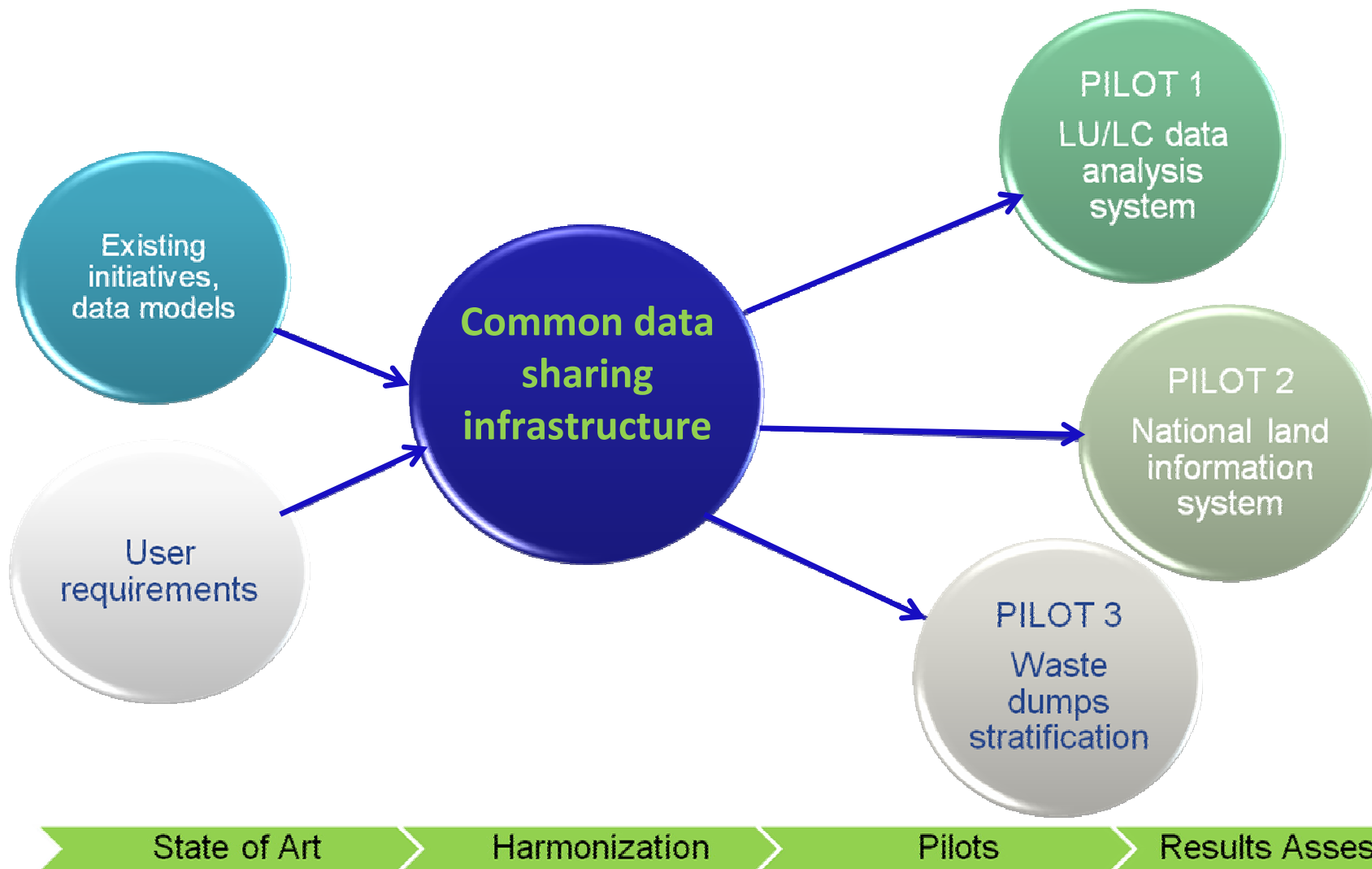
Contribute to European GDI

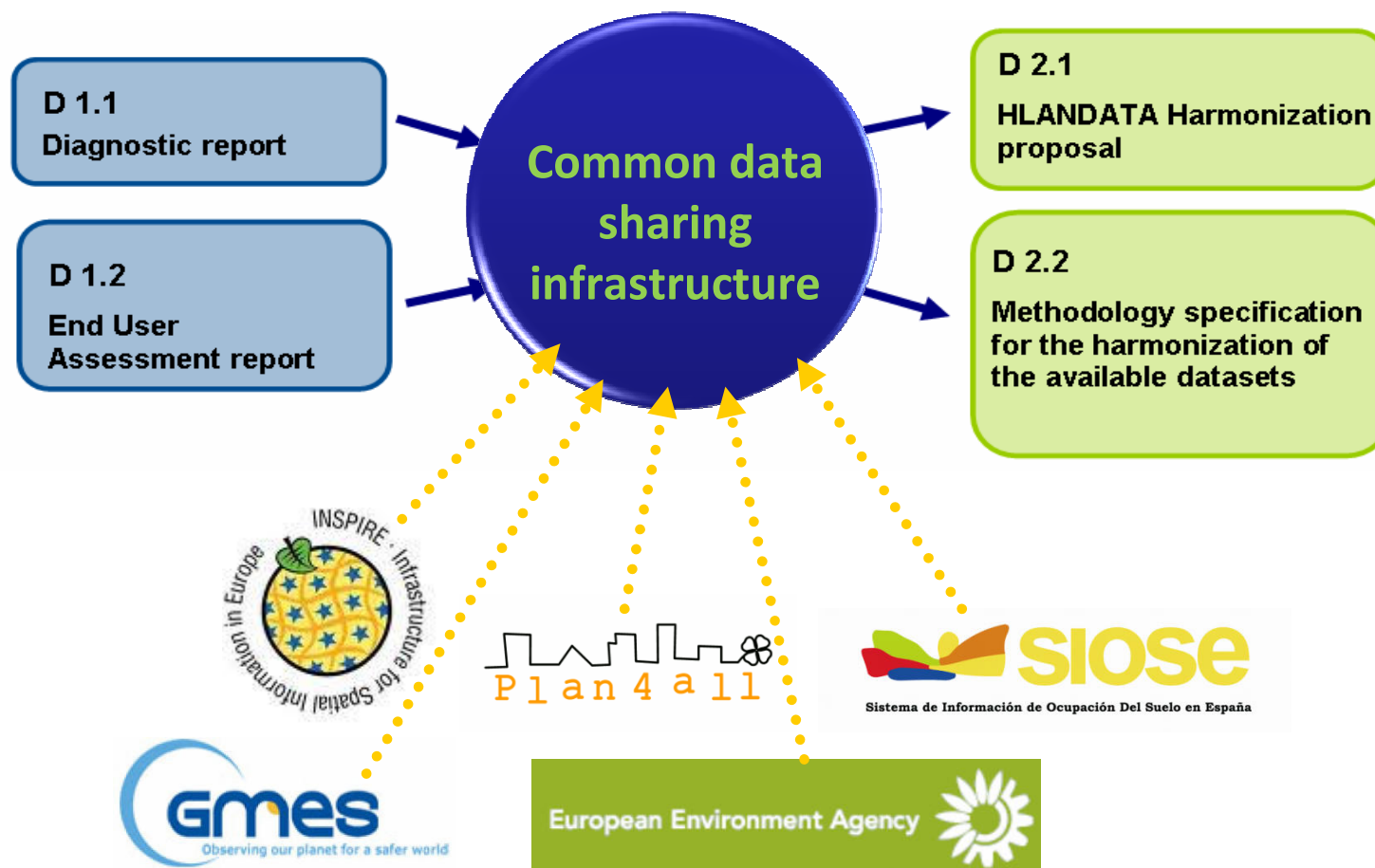


ICT Policy Support Programme









VALUE-ADDED SERVICES:

- ✓ *Advanced viewing*
- ✓ *Overlaying different layers*
- ✓ *Spatial and temporal analysis*
- ✓ *Downloads*
- ✓ *Data maintenance (for producers)*
- ✓ *E-learning tool*

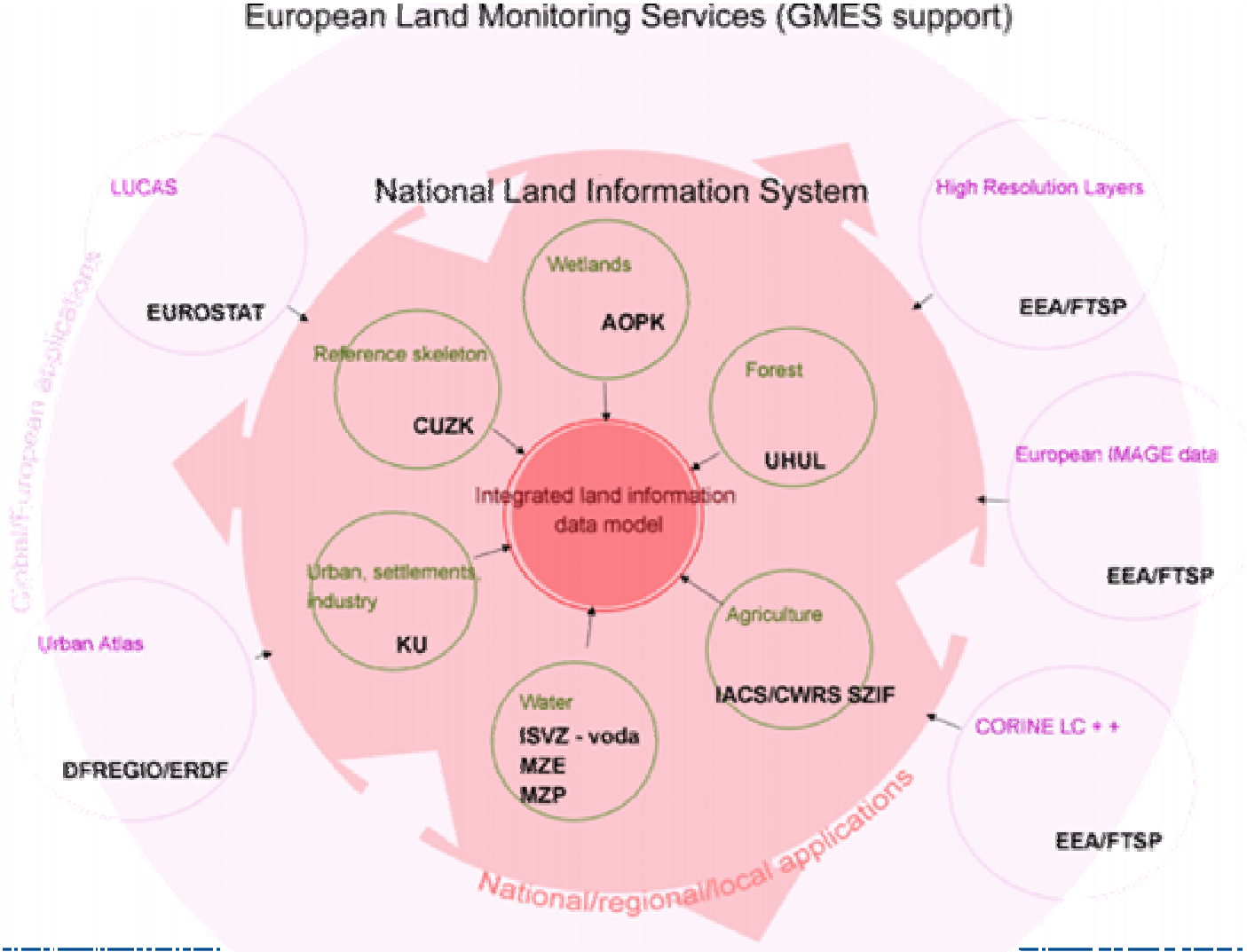


Target

intermediate user level;
public administration on
different levels,
Private companies,
universities,
planners, architects,
public
(Lativa, Spain)

PILOT 2: NATIONAL LAND INFORMATION SYSTEM

European Land Monitoring Services (GMES support)

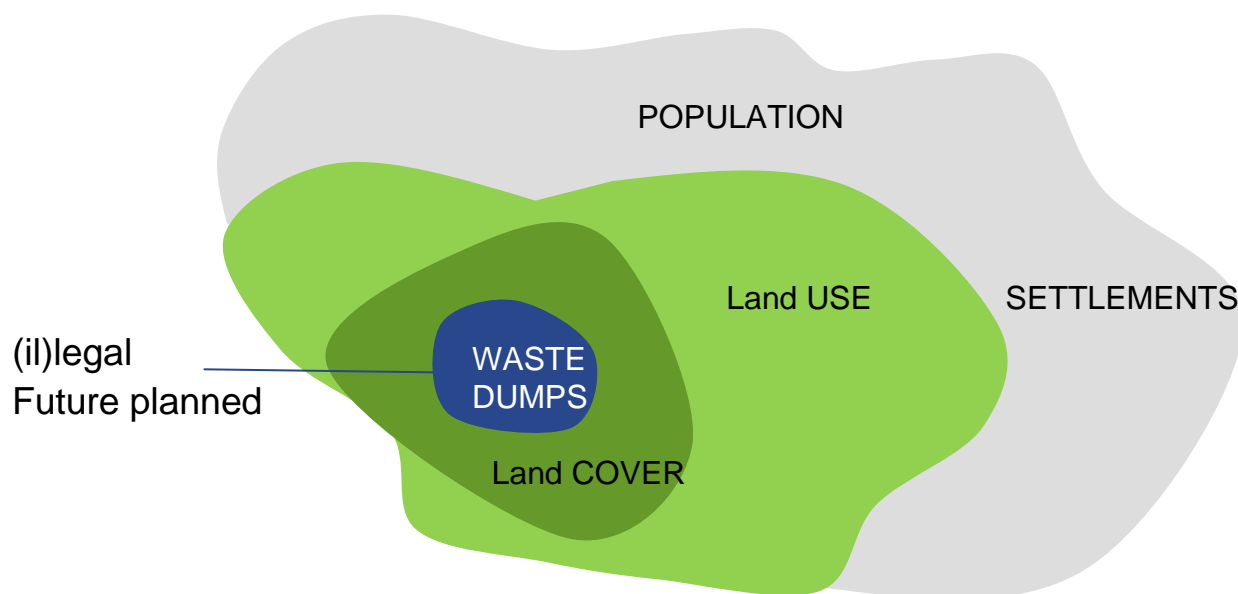


PILOT 2
National land
information
system

Target

Decision makers
in Czech Republic
and Lithuania

- ✓ Interactive Web Map Services
- ✓ Viewing and overlaying of different layers
- ✓ Spatial and temporal analysis
- ✓ Data maintenance



Target

Public

Ministry of Environment

Local governmental bodies

1 STANDARD SERVICE: common
HLANDATA data sharing infrastructure

ADDED-VALUE SERVICE 1: LU/LC data
analysis system

ADDED-VALUE SERVICE 2: National land
information system

ADDED-VALUE SERVICE 3: Stratification
of waste dumps

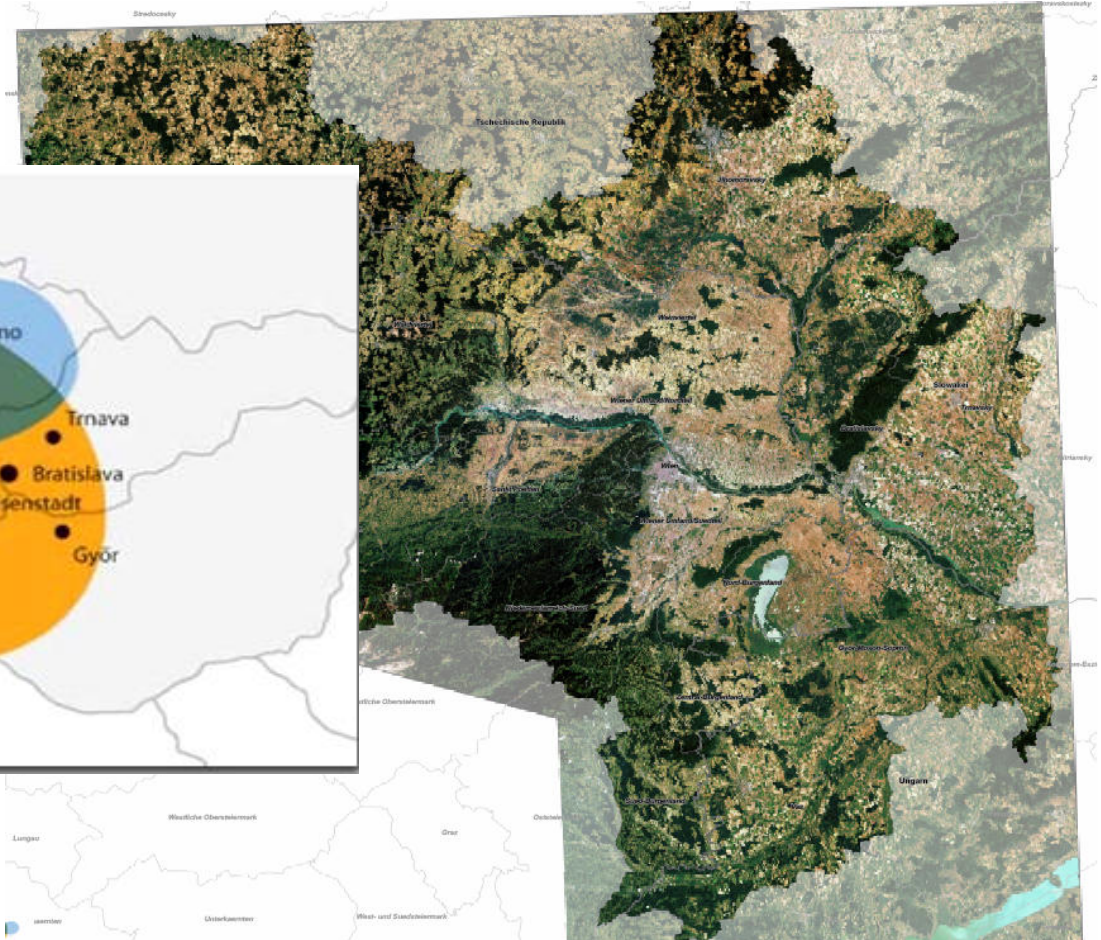
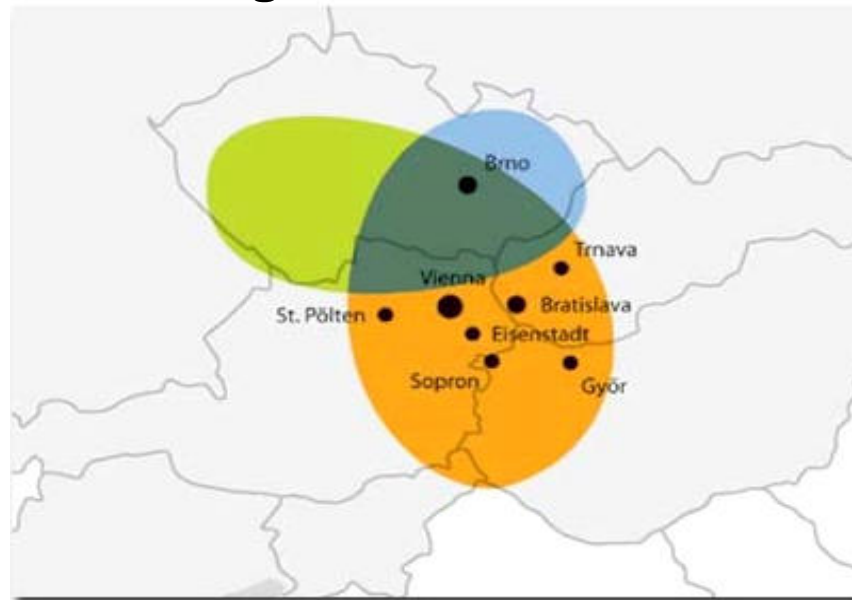
CONTRIBUTION to EUROPEAN GDI

Geodata
Infrastructures are a
Pan-European Matter



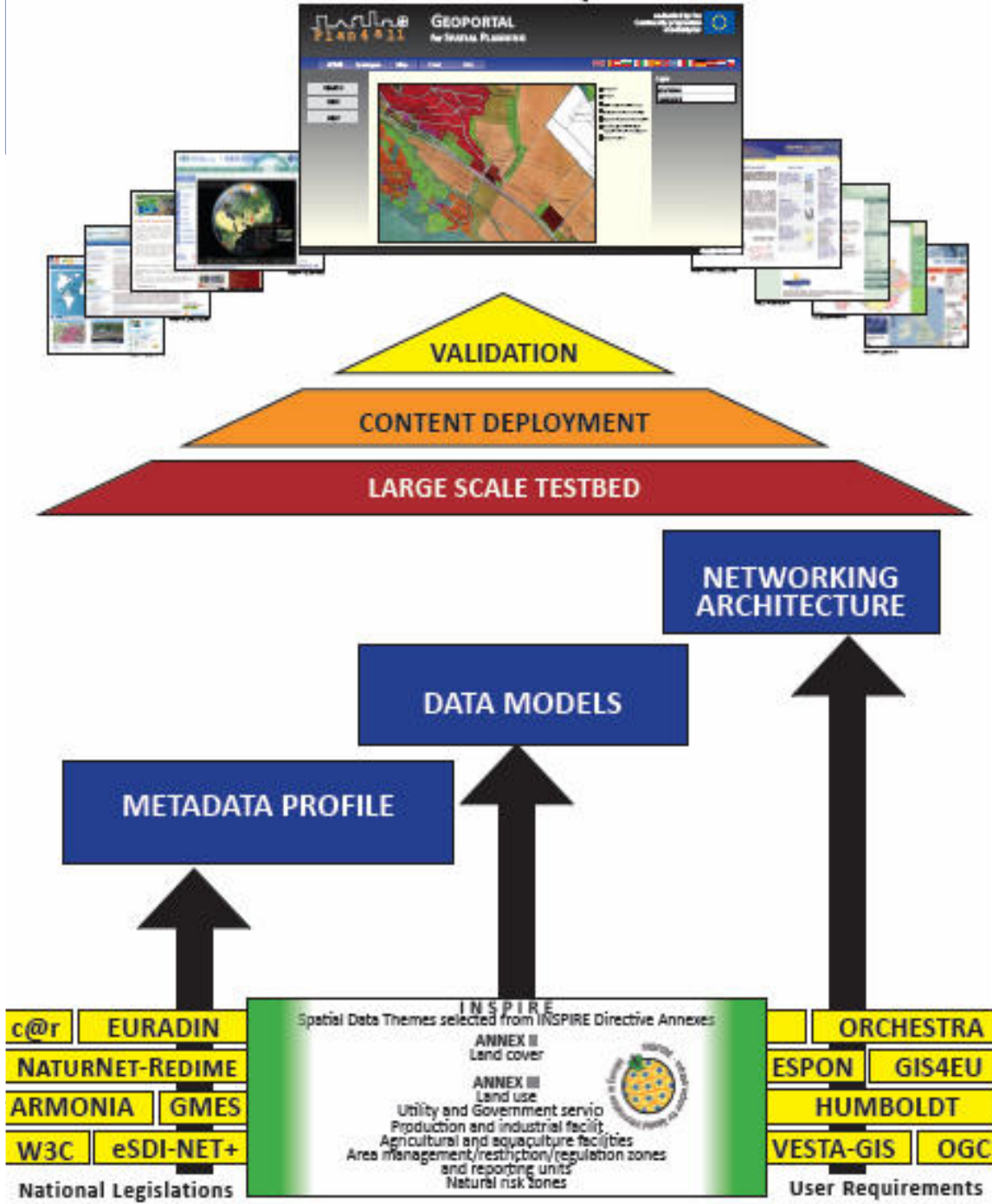
CentropeMAP & CentropeSTATISTICS

Interoperable cross-border GDI for the CENTROPE Region



In order of the
Planungsgemeinschaft Ost (PGO)
[Planning Organisation of the counties
Vienna, Burgenland and Lower Austria]

Plan4all Geoportal



May 2009 – October 2011

Harmonisation of spatial planning data according to the INSPIRE directive based on existing best practises in EU regions and municipalities and the results of current research projects

www.plan4all.eu



HLANDATA

www.hlandata.eu

www.ceit.at

Julia Neuschmid

j.neuschmid@ceit.at