

# An Opensource WebGIS Solution for a merging cross-border region

A best practice example Eurodistrict  
Saarmoselle



Fachbereich Raum- und Umweltplanung  
Fachgebiet Computergestützte Planungs-  
und Entwurfsmethoden  
Prof. Streich  
cpe.arubi.uni-kl.de

An Opensource WebGIS  
Solution for a merging  
cross-border region

Guido Kebedies  
Jan-Philipp Exner

create a tool for cross-border  
integration / cooperation in the  
eurodistrict saarmoselle

- maintenance geospatial data
- use of new approaches and technical solutions  
by planners

project

An Opensource WebGIS  
Solution for a merging  
cross-border region

Guido Kebedies  
Jan-Philipp Exner

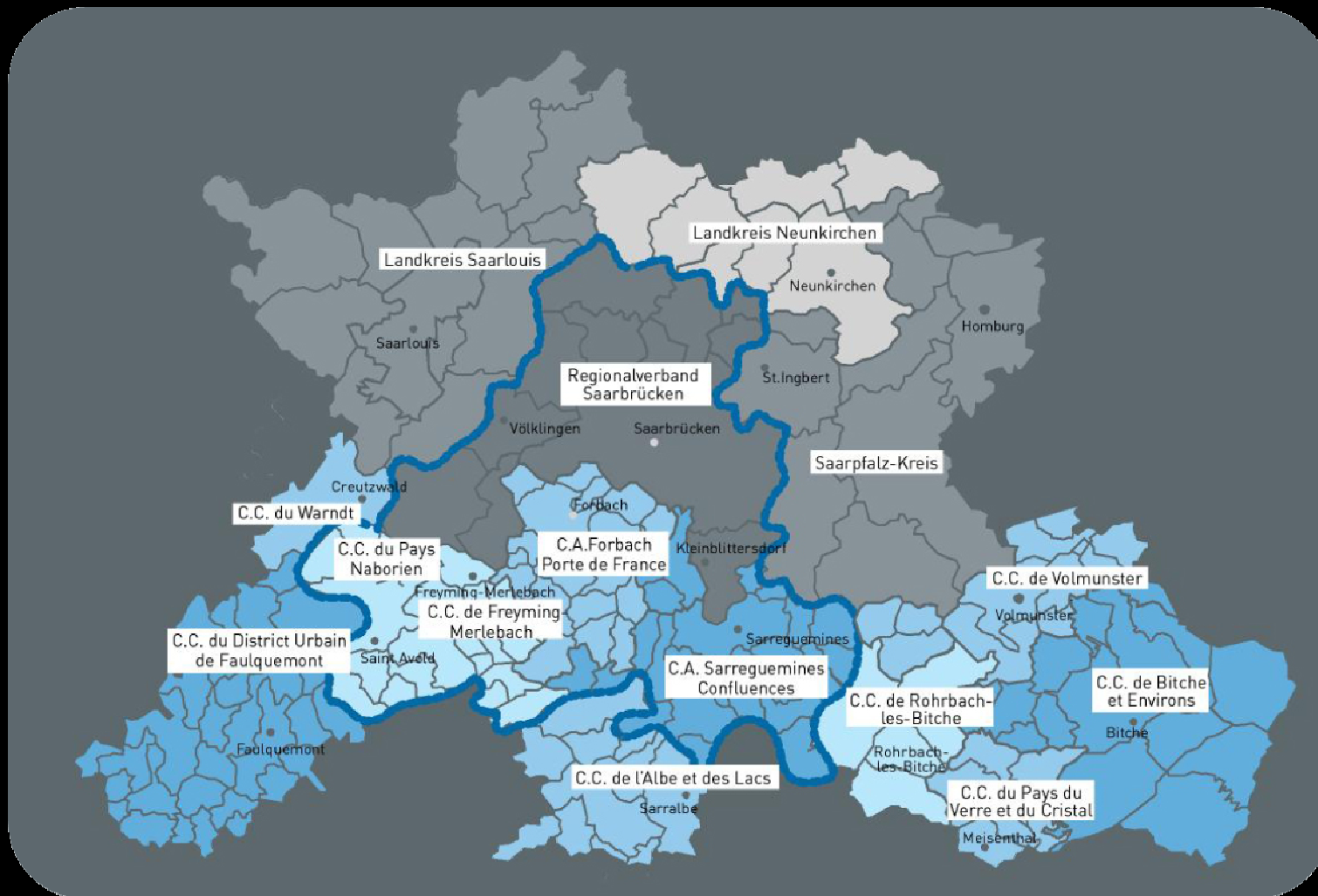
common commercial zones  
management between germany and  
france in the eurodistrict saarmoselle



studycase

An Opensource WebGIS  
Solution for a merging  
cross-border region

Guido Kebedies  
Jan-Philipp Exner



# the region

An Opensource WebGIS  
Solution for a merging  
cross-border region

Guido Kebedies  
Jan-Philipp Exner

administrative cooperation since 1999,  
eurodistrict saarmoselle 2010

- now: mostly on an administrative level
- aim: lower levels
  
- common economical cooperation

cooperation

An Opensource WebGIS  
Solution for a merging  
cross-border region

Guido Kebedies  
Jan-Philipp Exner

what kind of project could foster cohesion?

- common economical cooperation on a lower level
- common digital “bottom-up” commercial zone management system accessible through the internet

cooperation

An Opensource WebGIS  
Solution for a merging  
cross-border region

Guido Kebedies  
Jan-Philipp Exner

- preconfiguration and infrastructure central
- data input and accuracy by local authorities
  - responsibility on the lowest level  
(bottom-up & subsidiarity)
    - “user-generated-content”
  - use potentials of geoweb

idea

An Opensource WebGIS  
Solution for a merging  
cross-border region

Guido Kebedies  
Jan-Philipp Exner

data  
classification/aggregation/  
homogenization/conversion



conception web interface for  
1. administration  
2. data input



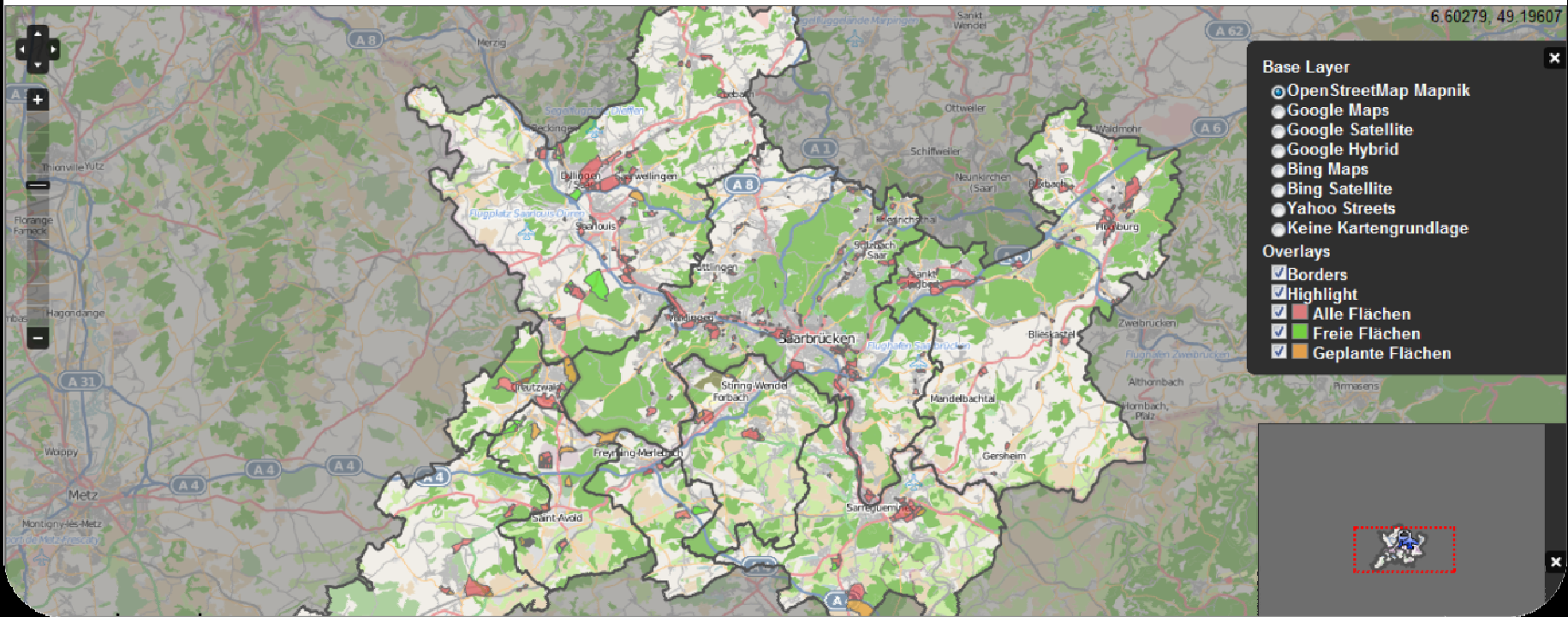
input meta data /  
maintenance

approach

An Opensource WebGIS  
Solution for a merging  
cross-border region

Guido Kebedies  
Jan-Philipp Exner

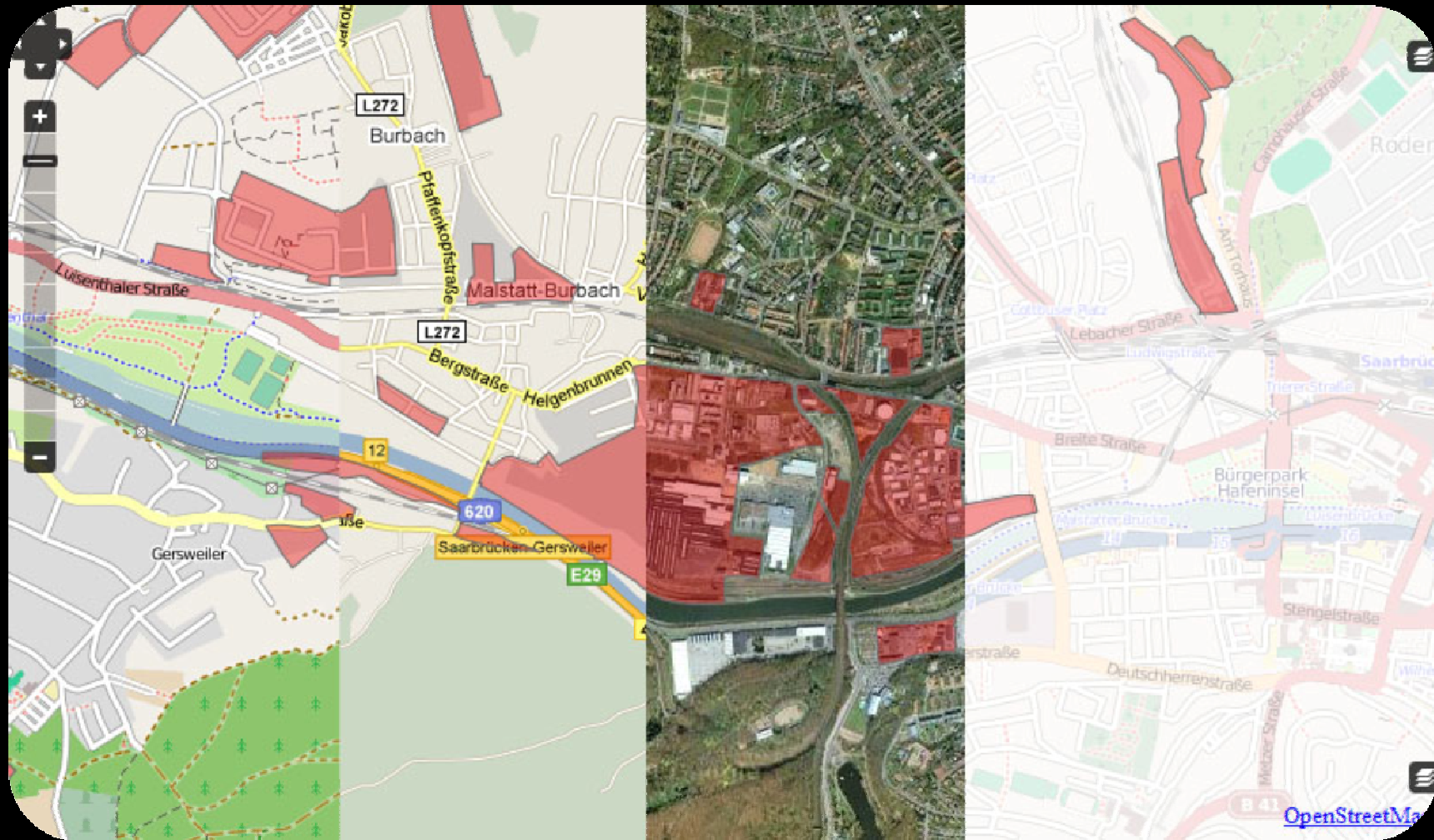




administration portal

An Opensource WebGIS  
Solution for a merging  
cross-border region

Guido Kebedies  
Jan-Philipp Exner



# functionalities

An Opensource WebGIS  
Solution for a merging  
cross-border region

Guido Kebedies  
Jan-Philipp Exner

Flächeninformationen | Informations sur la surface: ID: 318 x

Gemeindeverband :  
Intercommunalité : Landkreis Saarlouis

Gemeinde :  
Commune : Saarlouis

Name der Fläche :  
Nom de la zone : Fordwerke

Größe (ha) :  
Surface total (ha) : 141.52

Verfügbare Fläche (ha) :  
Surface disponible (ha) :

Verfügbarkeit :  
Disponibilité : belegt / occupe

Verfügbare Immobilien im  
Bestand (max. 30 Zeichen):  
Translation :

Vorwiegende Branche :  
Branche principale :

Weitere Branche :  
Autre branche :

Weitere Branche :  
Autre branche :

Baurecht :  
Droit de la construction :

Besetzungsgrad :  
Taux d'occupation : 0% verfügbar / disponible

**Ansprechpartner | Interlocuteur :**

Anrede :  
Formule d'appel :

Vorname :  
Prénom :

Nachname :  
Nom :

e-mail Adresse :  
Adresse e-mail :

Vorwahl :  
Indicatif : +49

Nummer :  
Numéro :

**Weitere Details | Détails complémentaires :**

Link (ohne "http://") :  
Lien (sans "http://") :

Bildupload :  
Chargement d'images : Upload

Vorschaubild :  
Aperçu de l'image :

data input

An Opensource WebGIS  
Solution for a merging  
cross-border region

Guido Kebedies  
Jan-Philipp Exner

Auswahl | Selection:

Gemeindeverband | Intercommunalité: Eurodistrict

Gemeinde | Commune:

Name | Nom:

Größe | Surface total (ha): Min. Max.

Freifläche | Surface disponible (ha): Min. Max.

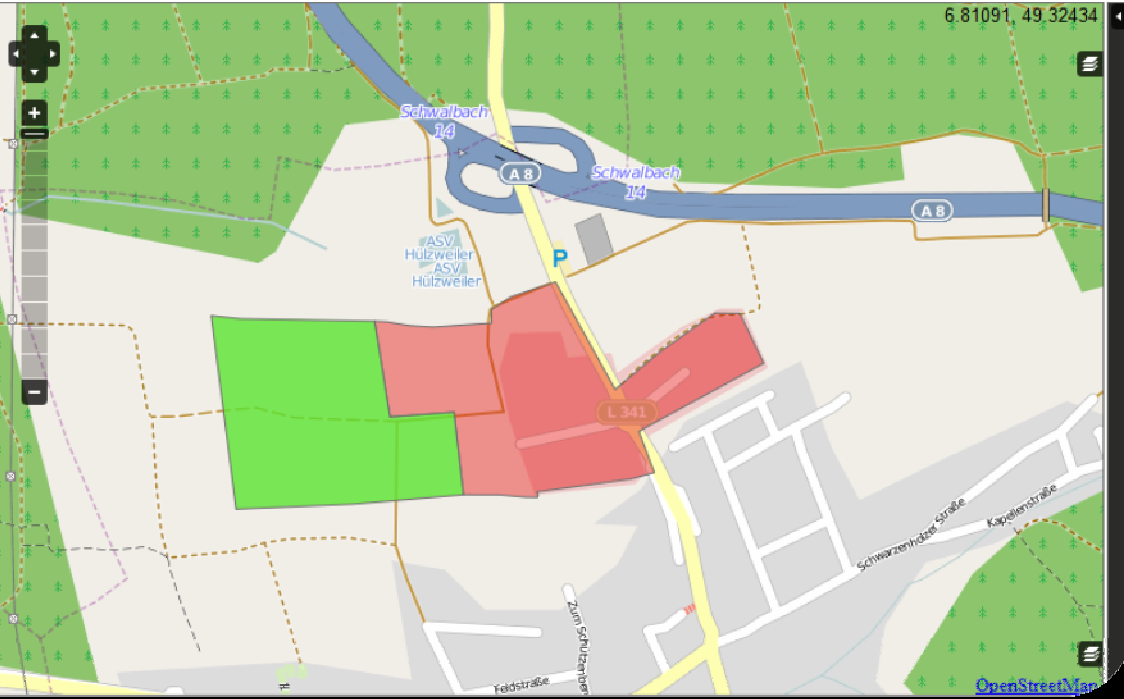
Suche in | Rechercher dans:

Belegte Flächen | Surfaces occupe

Freie Flächen | Surfaces disponible

Suche | Recherche

Gemeindeverband: Intercommunalité:	Name: Nom:	ha / frei: ha / disponible:
Schwalbach		
Landkreis Saarlouis Schwalbach	Hild und Kuhnacker	20,96
Landkreis Saarlouis Überherrn	Kunzelfelderhuf	1,27
Landkreis Saarlouis Überherrn	Kunzelfelderhuf	0,77
Landkreis Saarlouis Überherrn	Kunzelfelderhuf	3,29
Landkreis Saarlouis Überherrn	Langwies	0,72



# viewer portal

An Opensource WebGIS  
Solution for a merging  
cross-border region

Guido Kebedies  
Jan-Philipp Exner

commercial zone management just a starting point for further cooperation

- one tourism portal for the region
- involve citizens
- strengthen local identity

perspective

An Opensource WebGIS  
Solution for a merging  
cross-border region

Guido Kebedies  
Jan-Philipp Exner

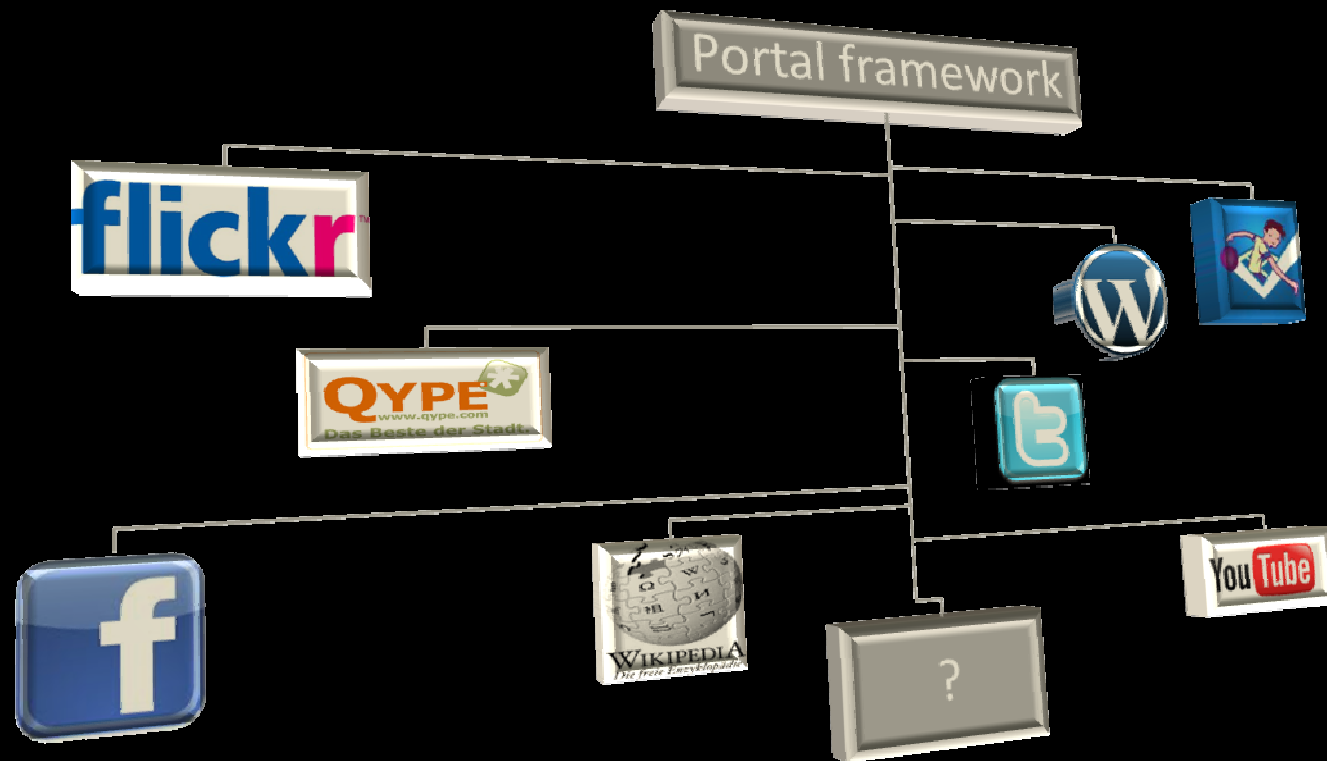
# integration of social / community data

- data directly from the citizens
- up-to-date data (ugc)
- reason: technology / media development

social perspective

An Opensource WebGIS  
Solution for a merging  
cross-border region

Guido Kebedies  
Jan-Philipp Exner



composition

An Opensource WebGIS  
Solution for a merging  
cross-border region

Guido Kebedies  
Jan-Philipp Exner

standards

- open geospatial consortium (ogc)
- inspire

flexible construction  
design & usability

requirements

An Opensource WebGIS  
Solution for a merging  
cross-border region

Guido Kebedies  
Jan-Philipp Exner



cohesion and cooperation  
strengthen bottom-up

- responsibility – awareness
- extension of the administration portal
- promote cross-border region as innovative

perspectives

An Opensource WebGIS  
Solution for a merging  
cross-border region

Guido Kebedies  
Jan-Philipp Exner

cpe.arubi.uni-kl.de



Fachbereich Raum- und Umweltplanung  
Fachgebiet Computergestützte Planungs-  
und Entwurfsmethoden  
Prof. Streich  
cpe.arubi.uni-kl.de

An Opensource WebGIS  
Solution for a merging  
cross-border region

Guido Kebedies  
Jan-Philipp Exner