

CentropeMAP and CentropeSTATISTICS

Cross-Border Geodata Infrastructure with User-Defined Thematic Maps

on behalf of the
Planungsgemeinschaft Ost (PGO)
(Eastern Austrian Planning Association)

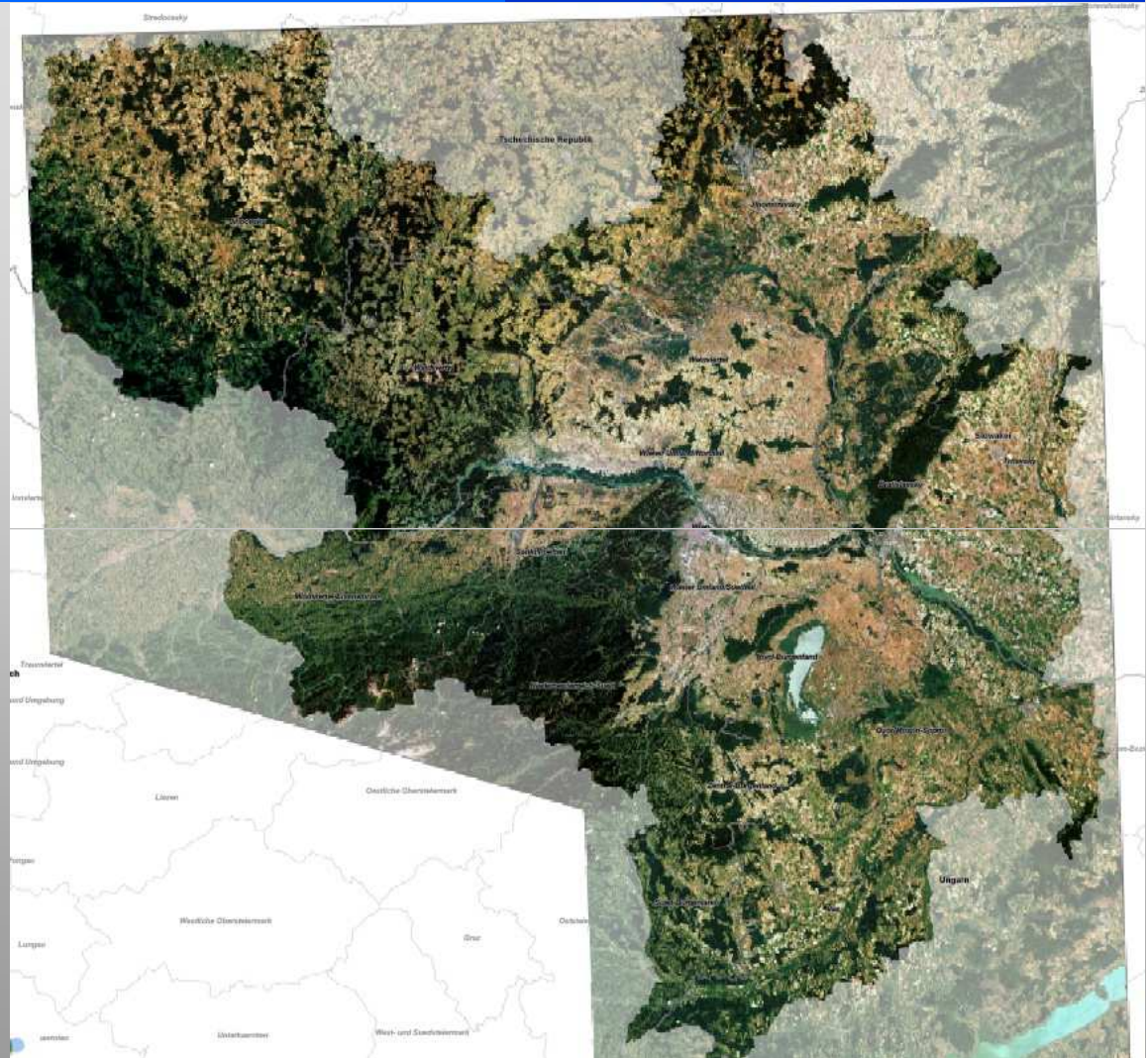
Manfred Schrenk*
Clemens Beyer*
Christian Eizinger*
Walter Pozarek**

*** CEIT ALANOVA**

Central European Institute of Technology,
Dept. for Urbanism, Transport,
Environment & Information Society
Schwechat, Austria, <http://www.ceit.at/>

**** PLANUNGSGEMEINSCHAFT OST,**

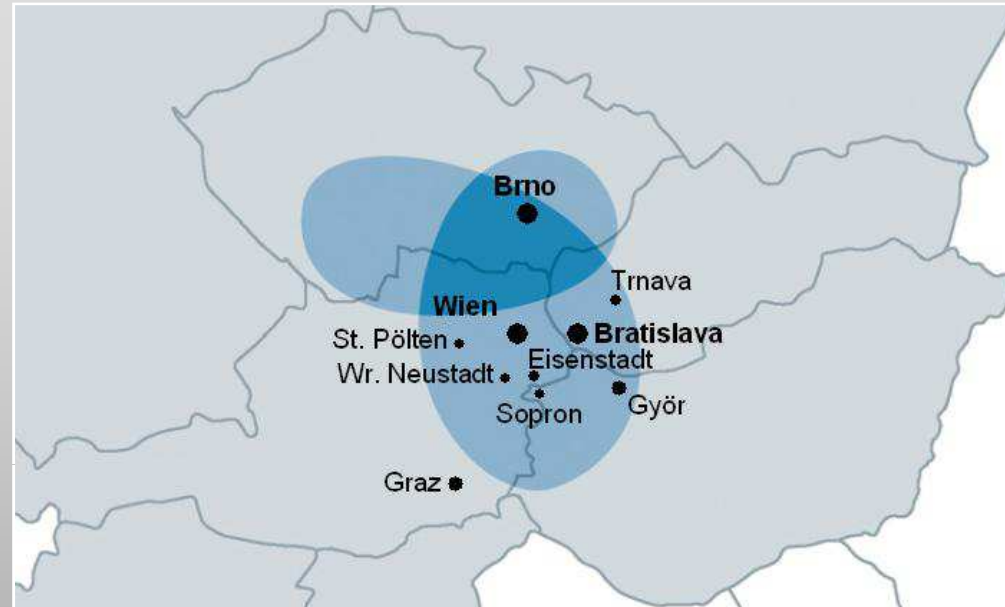
Vienna, Austria, <http://www.planungsgemeinschaft-ost.at/>



- I. The Centrope Region
- II. CentropeMAP
- III. CentropeSTATISTICS
- IV. Technical Implementation
- V. Live Demonstration

CENTROPE Partner Regions

- Czech Republic
 - Region: South Moravia
 - City: Brno
 - *Interested: Olomouc*
- Slovak Republic
 - Region: Bratislava, Trnava
 - Cities: Bratislava, Trnava
- Hungary
 - Region (county): Győr-Moson-Sopron
 - Cities: Győr, Sopron
- Austria
 - Region (federal states): Burgenland, Lower Austria, Vienna
 - Cities: Eisenstadt, St. Pölten, Vienna
 - *Interested: Wiener Neustadt*



Population

- 6 million
- of which 3 million in cities



Infrastructure

- 3 international airports (Brno, Bratislava, Vienna)
- 2 Danube river ports (Vienna, Bratislava)
- Pan-European corridors

Economy

- 3.8 million employed
- 55 – 65 % employed in service sector
- unemployment rate between 4 and 14 %
- GDP growth between 0.8 % and 3.6 % since 2003



(Source: Wikipedia)

- I. The Centrope Region
- II. CentropeMAP**
- III. CentropeSTATISTICS
- IV. Technical Implementation
- V. Live Demonstration

Centrope MAP Challenges

- Legal planning responsibilities on different levels
- Data responsibilities on different levels
- Administrative boundaries = data boundaries
- No “common data infrastructure” available, only “isolated applications”

Input to Centrope Map

Geodata

Land use

(Corine Land Cover 2000, Level 3, all layers separately)

about 32 categories

Administrative borders

NUTS 2, NUTS 3, LAU 2

Infrastructure (linear):

road network
railway network
conductions, pipes

Infrastructure (punctiform):

transportation (stops, P+R)
education
health/social
administration
leisure/recreation
culture
supply and disposal
other

Planning:

building land
protection areas
Natura 2000
world heritage
ground water protection
flood protection
mining

Anmerkungen:

WEBmap Service: dh.
Verknüpfung mit anderen
Servern (Geoland, SK, CZ, HU)
Karten durch user online
generierbar und als Bild (PDF
hochauflösend) downloadbar.

Statistical data

Database

NUTS 2, NUTS 3, LAU 2 (up to availability and meaning)

Area:

cadastral area, area of durable settlement, forest, water bodies,
...

Population:

Development, migration balance, balance of births
prognoses, age groups, nationalities
educational qualification
household size, secondary residences
employed, unemployed
structure of income, purchasing power
settlement structure

Occupation and Economy:

places of work, business structure
branch structure, value added
jobs, commuter structure
agriculture, forestry, tourism

Infrastructure:

(Data linked with punctiform infrastructure data)
administration, education, social, leisure, recreation, tourism,
culture, ...

Visualisation

of the data based on
administrative borders
(maps, diagrams)

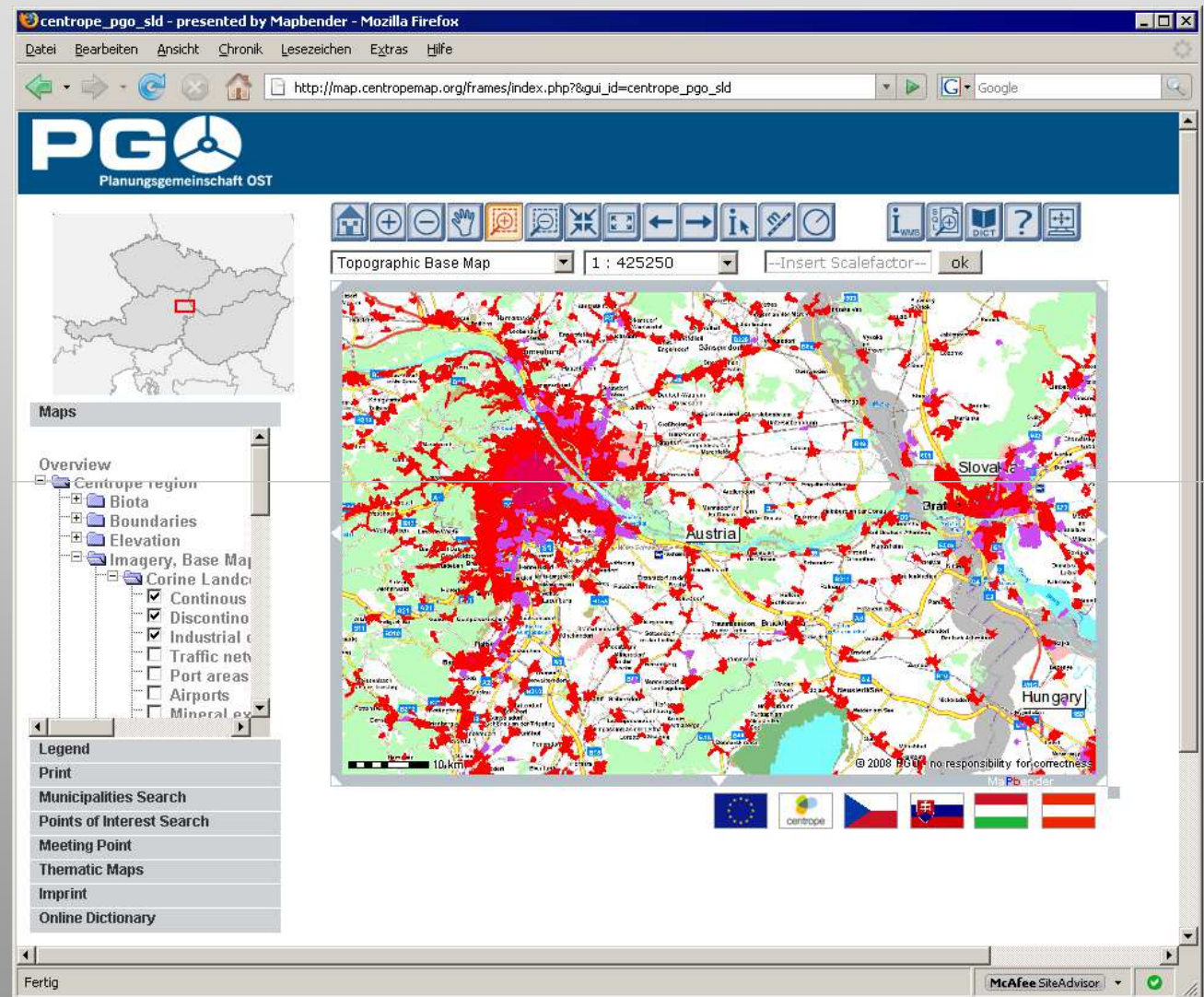
Remarks:

Phase 1:
downloadable print-
ready maps (PDF)

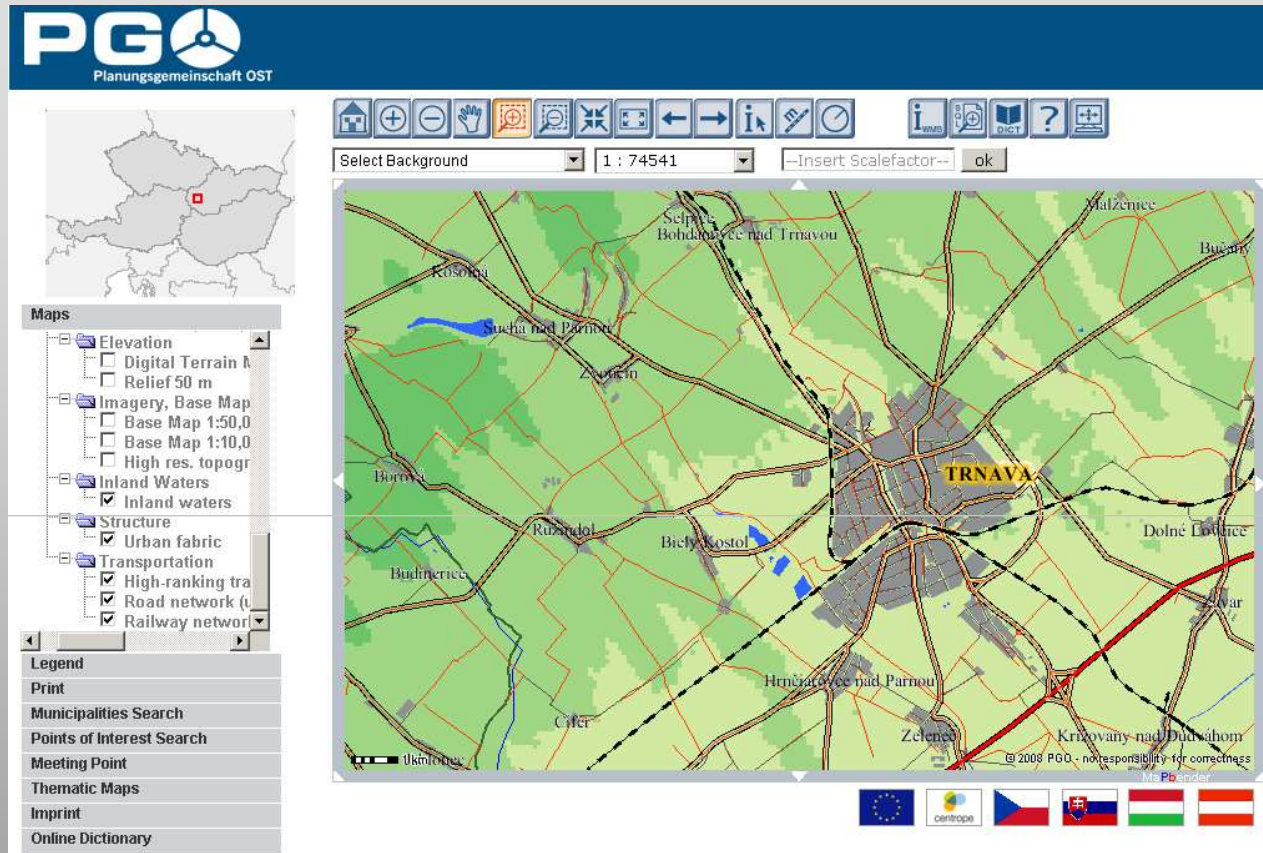
Phase 2:
online interactive maps

CentropeMAP Web Application

- datasets come directly from project partners → no redundancy, always up-to-date
- functions: Zoom, Pan, Query, Search, Tell-A-Friend, Measurement
- hundreds of layers for the whole region and sub-regions
- background maps from simplified views to high-resolution satellite images and aerial views (ortho-photos)
- map generation on the fly

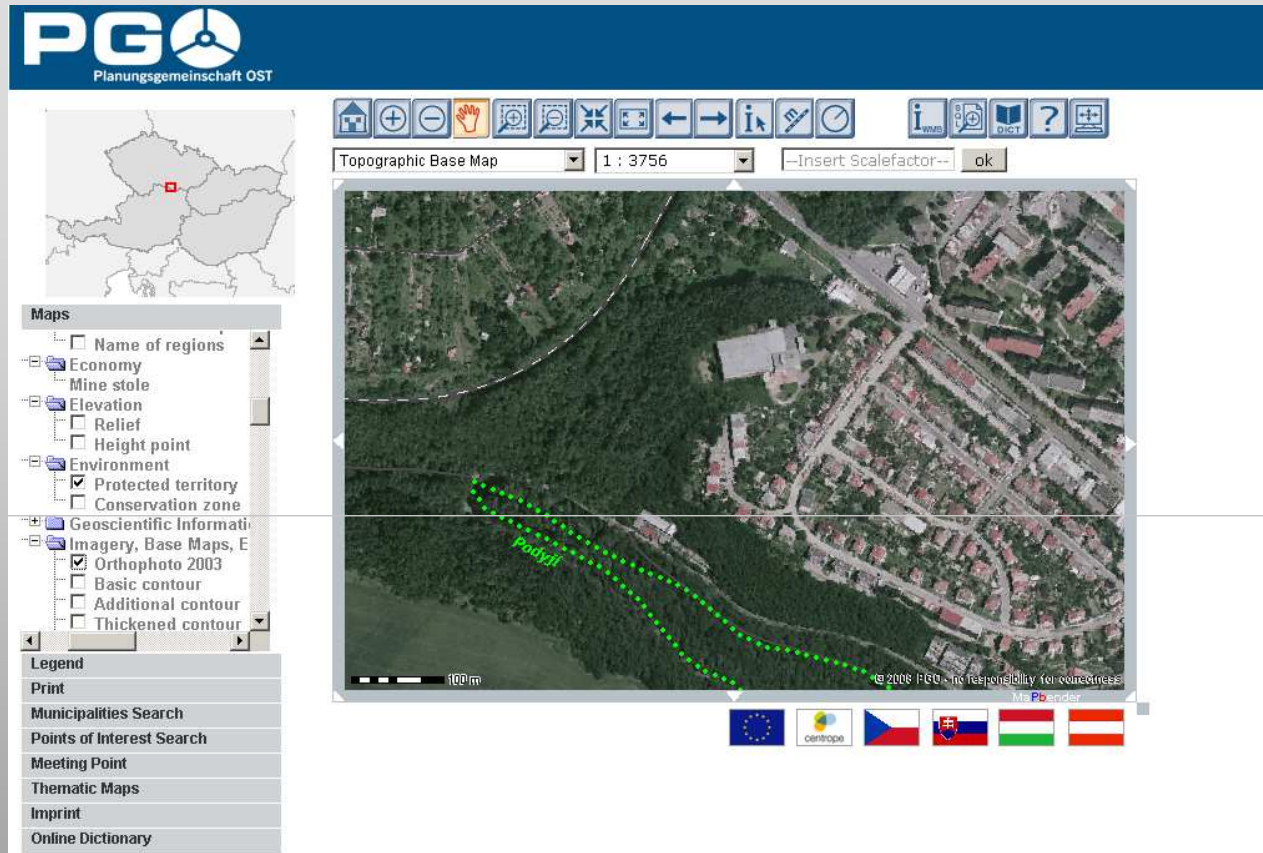


Data Examples



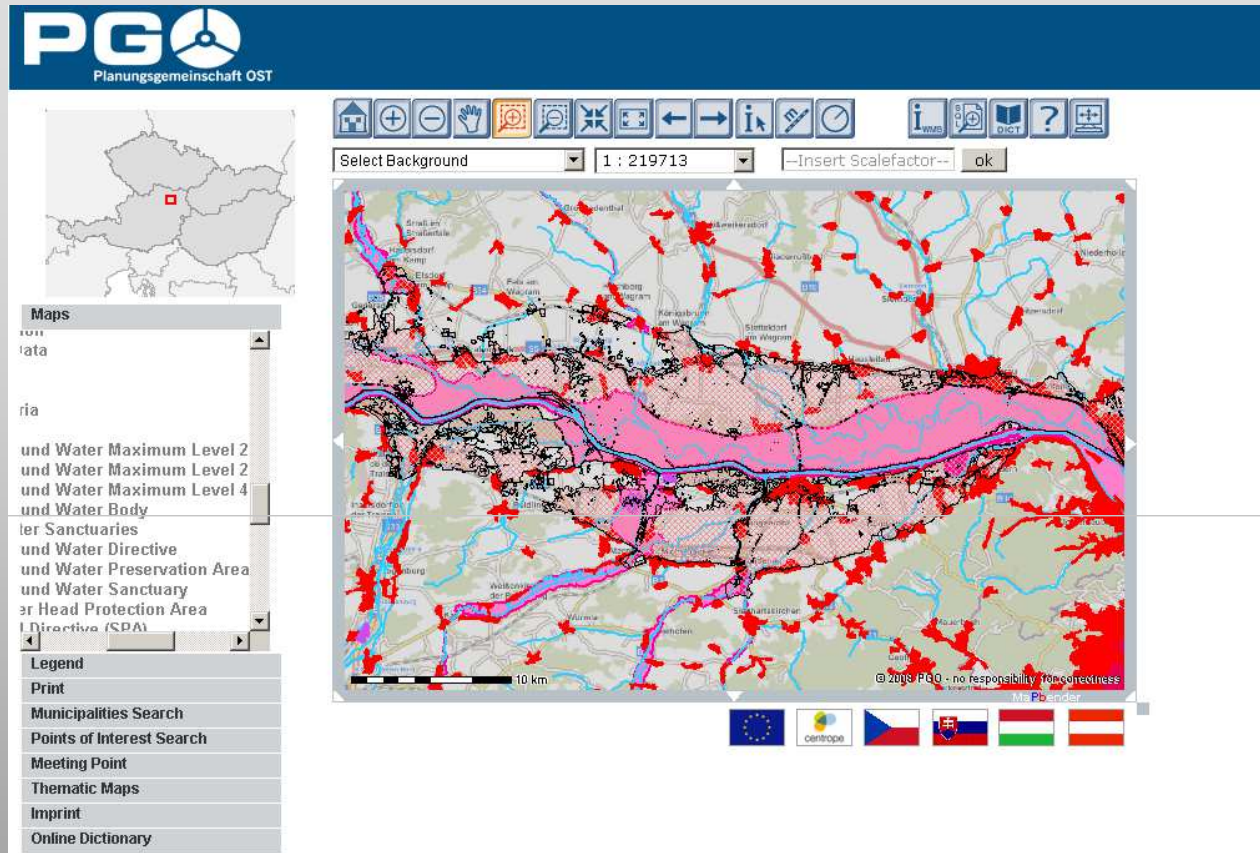
elevation, road network, railway network, urban fabric, inland waters

Data Examples



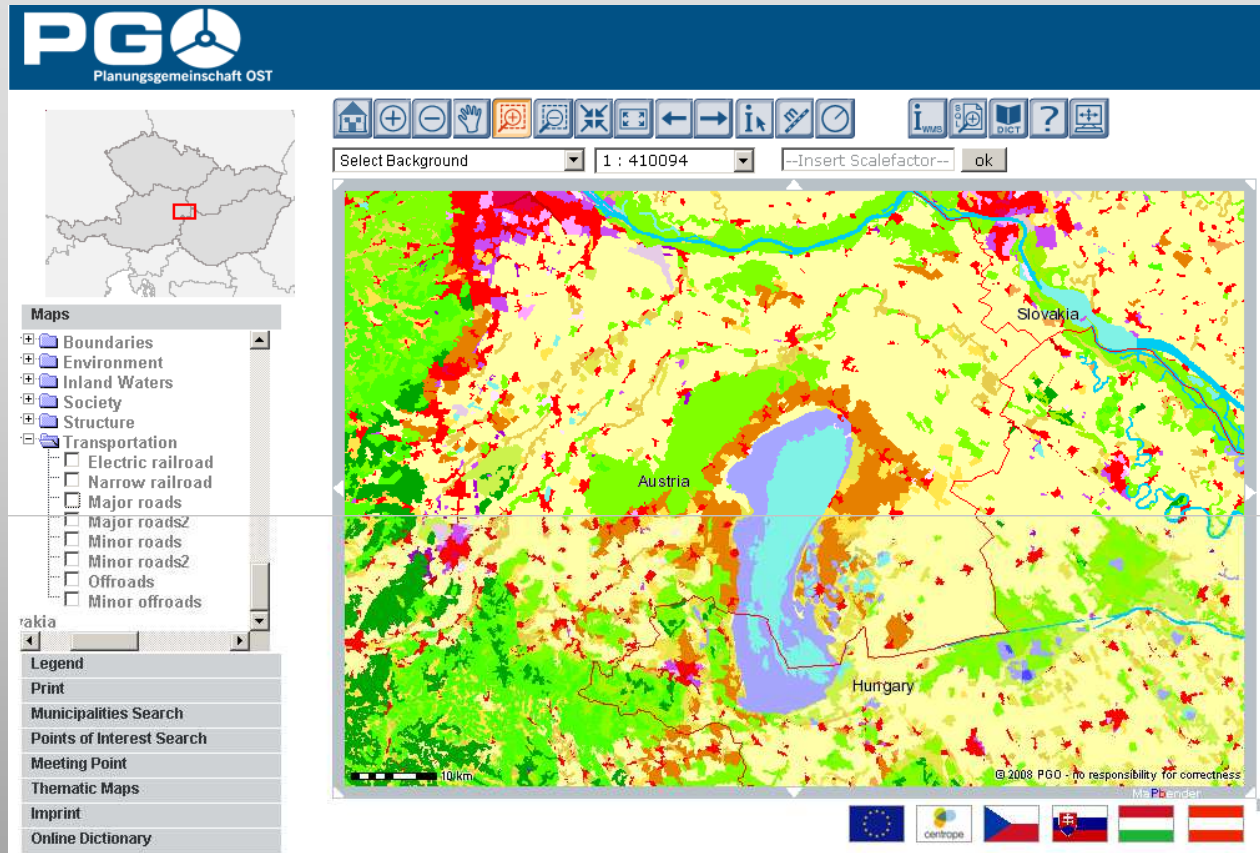
high resolution orthophoto, environmental protected territory (Znojmo, CZ)

Data Examples



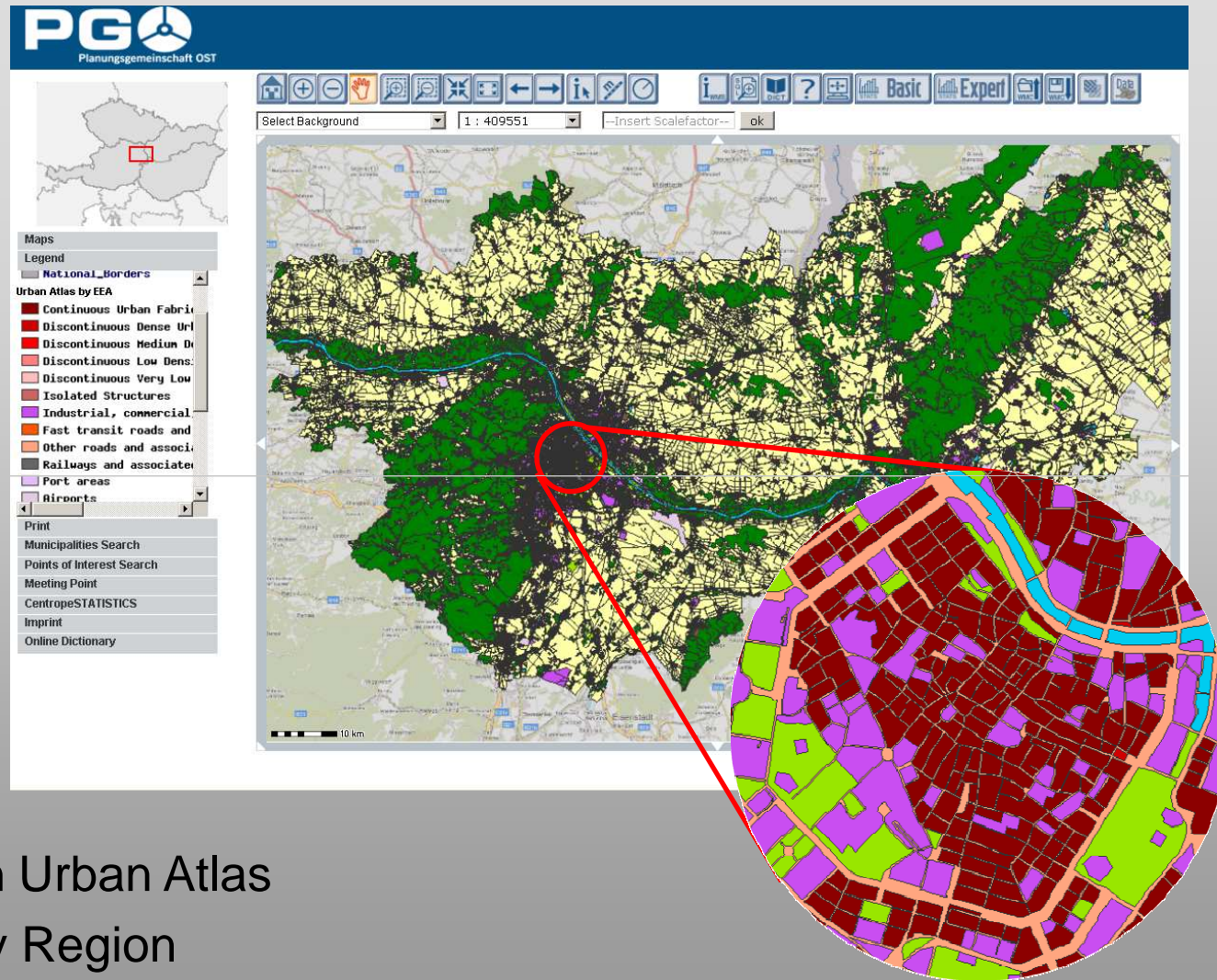
urban fabric, rivers, inundation risk areas, high ground water level (<2m)
(Danube, Lower Austria)

Data Examples



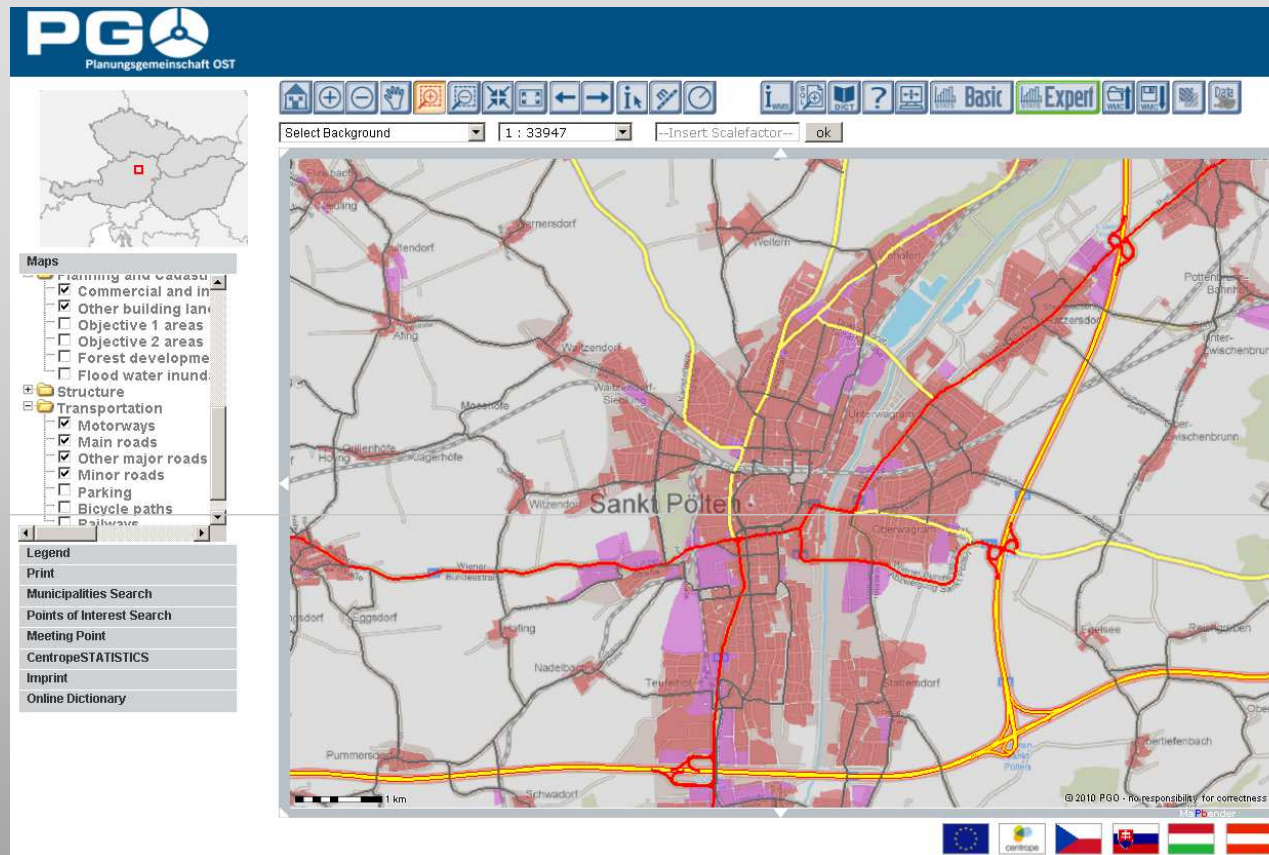
Corine Land Cover Level 2 (Lake Neusiedl Region)

Data Examples



European Urban Atlas
(Twin City Region
Vienna-Bratislava)

Data Examples



Building Land (Residential/Commercial), Road Network
(St. Pölten, Lower Austria)

- I. The Centrope Region
- II. CentropeMAP
- III. CentropeSTATISTICS**
- IV. Technical Implementation
- V. Live Demonstration

CentropeSTATISTICS is a cross-border database project of these co-operating statistics offices/departments in the Centrope Region

(on behalf of PGO - Planungsgemeinschaft Ost/Eastern Austrian Planning Association, and technically led by CEIT ALANOVA gemeinnützige GmbH)

- **Czech Republic:**
CZSO - Czech Statistical Office – Český statistický úřad (ČSÚ)
- **Slovak Republic:**
Statistical Office of the SR – Štatistický úrad Slovenskej republiky
- **Hungary:**
HCSO - Hungarian Central Statistical Office – KSH - Központi Statisztikai Hivatal
- **Austria:**
Statistics Departments of the three Austrian federal states Burgenland, Lower Austria and Vienna



Workshops:

September 2008 in Schwechat,
March 2009 in Schwechat,
September 2009 in Brno,
2010 t. b.a.

CentropeSTATISTICS User Interface

http://www.centropemap.org - Centrope STATISTICS - Mozilla Firefox

Select attributes for Number of nights spent by season, visitors and period

Year: 2003_2004

Type: residents, n-residents, non-residents

Season: winter, summer

Select all, Switch selection, Clear (for each attribute)

View Table

You have to select at least one characteristic from each attribute in order to proceed.

•Functions:

Show – Export – Query – Sort

http://www.centropemap.org - Centrope STATISTICS - Mozilla Firefox

Order datasets by: --- Please select --- ascending

Apply order, Clear order

Show all datasets

Apply limit

Change decimal separator to comma, Switch to CSV view, Reset all

Help

code	name	year	type	season	MAP	overnight_stays
AT10101	Eisenstadt	2003_2004	n-residents	winter		34
AT10201	Rust	2003_2004	n-residents	winter		441
AT10301	Breitenbrunn	2003_2004	n-residents	winter		978
AT10302	Donnerskirchen	2003_2004	n-residents	winter		710
AT10303	Großhöflein	2003_2004	n-residents	winter		207
AT10304	Hornstein	2003_2004	n-residents	winter		4802

- All available indicators are displayed
- Multiple choice allowed
- Results are shown as table
- Dynamic Database Live Query

→ On the fly Map Generation

CentropeSTATISTICS User Interface

Statistics for persons_per_household:

Minimum:	2
Mean:	2.629
Median:	2.6
Maximum:	3.1
Variance:	0.045
Std. Dev.:	0.213

Select method: --- Please select ---

Select number of classes: --- Please select ---

Select colour ramp: Red monochromatic

Invert colour ramp

Apply

Reset all

NUTS 3 Overview: Population density, dwellings, population by age groups

Statistics for persons_per_household:

Minimum:	2
Mean:	2.629
Median:	2.6
Maximum:	3.1
Variance:	0.045
Std. Dev.:	0.213

Select method: Quantiles

Select number of classes: 5

Select colour ramp: Red monochromatic

Invert colour ramp

Apply

Reset all

Create Map

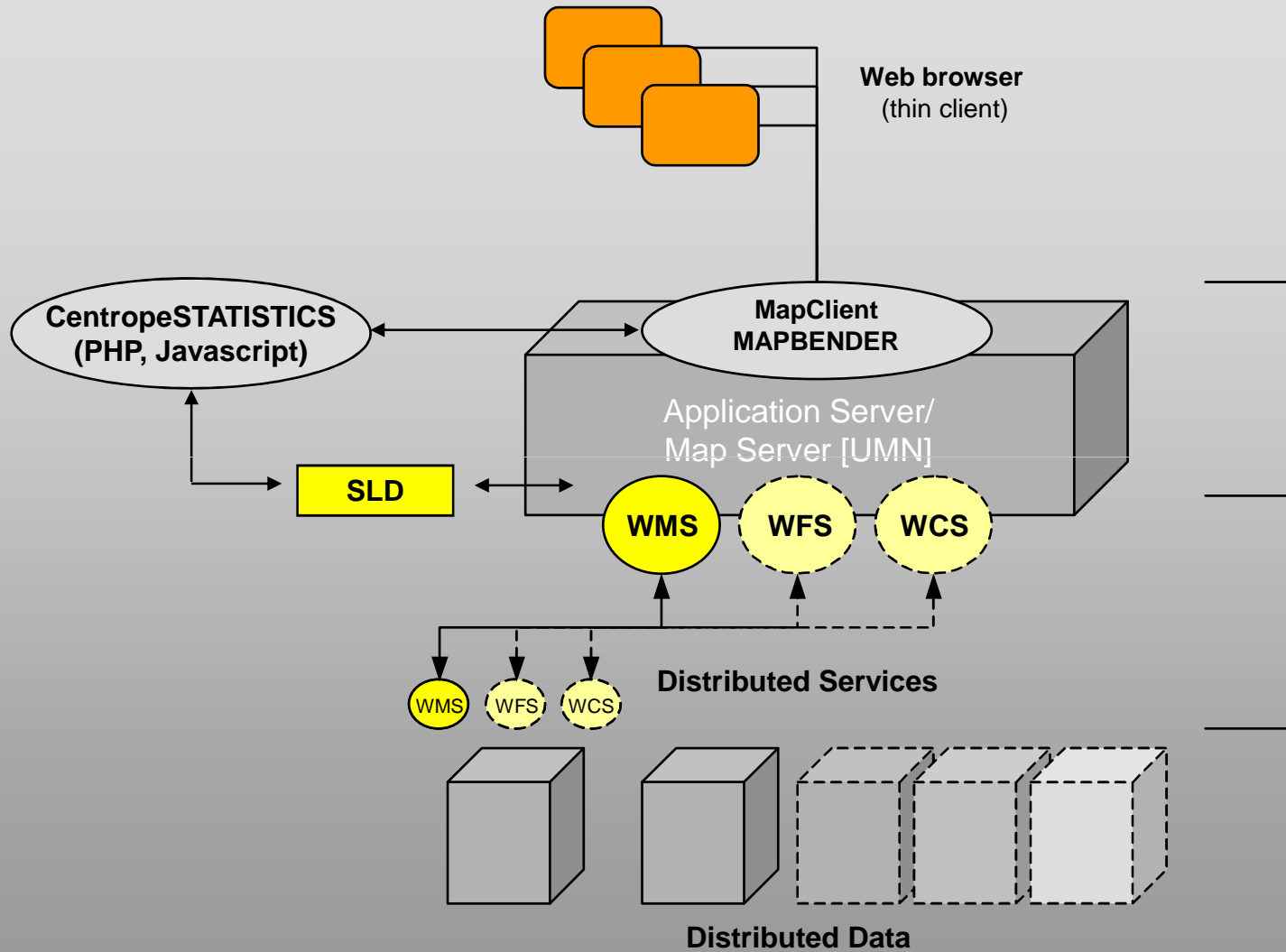
Legend:

- 1 - 2.6
- 2.6 - 2.6
- 2.6 - 2.7
- 2.7 - 2.8
- 2.8 - 3.1

→ On the fly Map Generation

- I. The Centrope Region
- II. CentropeMAP
- III. CentropeSTATISTICS
- IV. Technical Implementation**
- V. Live Demonstration

System Architecture



- I. The Centrope Region
- II. CentropeMAP
- III. CentropeSTATISTICS
- IV. Technical Implementation
- V. Live Demonstration

Thank you for your attention!

www.centropemap.org

Contact:

**Central European Institute of Technology
CEIT ALANOVA**

Concorde Business Park 2/F
2320 Schwechat
Austria

m.schrenk@ceit.at
c.beyer@ceit.at
c.eizinger@ceit.at

<http://www.ceit.at>



CEIT ALANOVA
Institute of Urbanism,
Transport, Environment
and Information Society

