

FROM MIGRATION TO URBAN SPRAWL

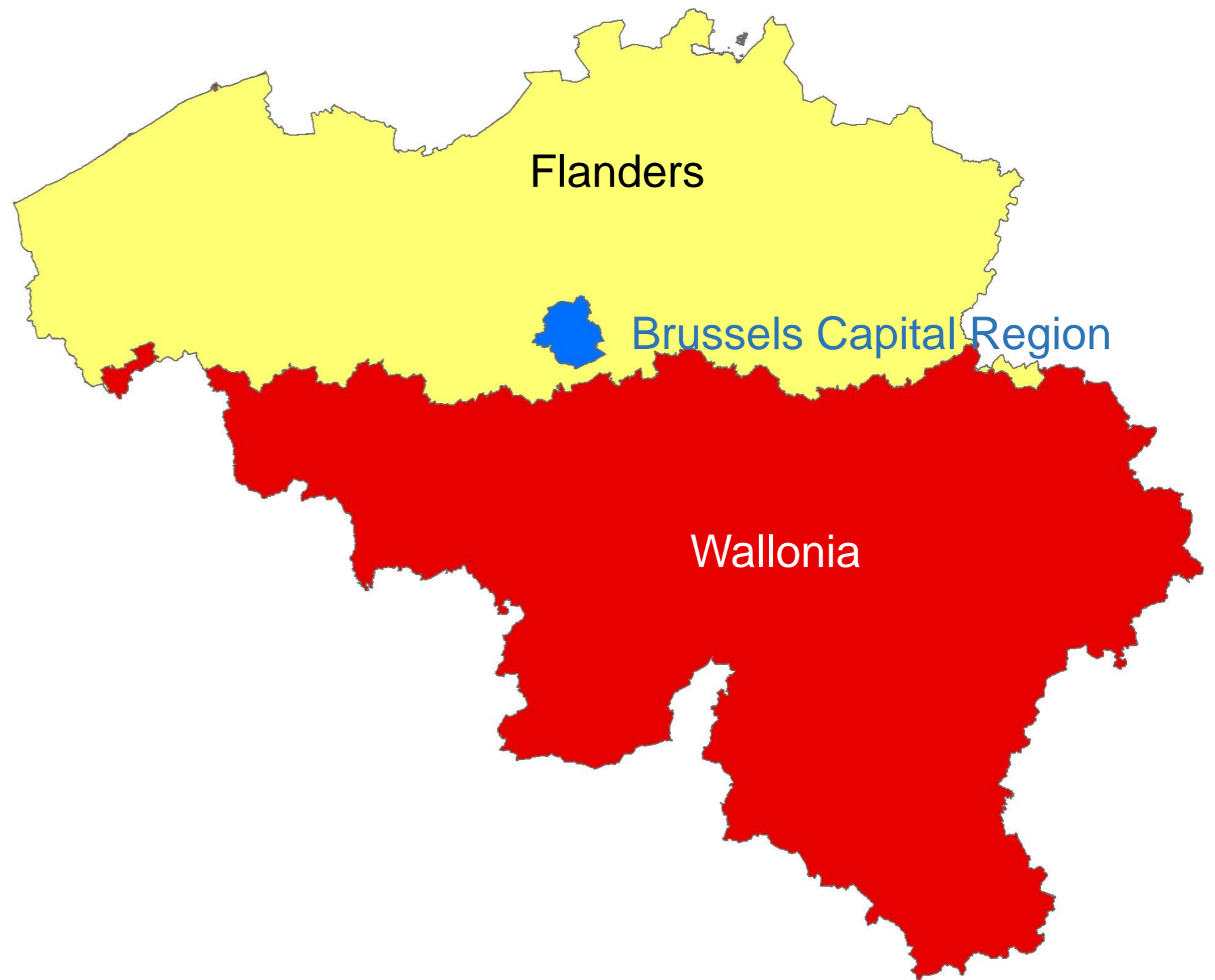
Isabelle Loris & Ann Pisman

LAYOUT PRESENTATION

“From migration to urban sprawl in Flanders (Belgium)”

- Migration: major flows internal and external
- Suburbanization
- Policy respons: spatial planning
- Case Belgium / Flanders

BELGIUM IN BRIEF



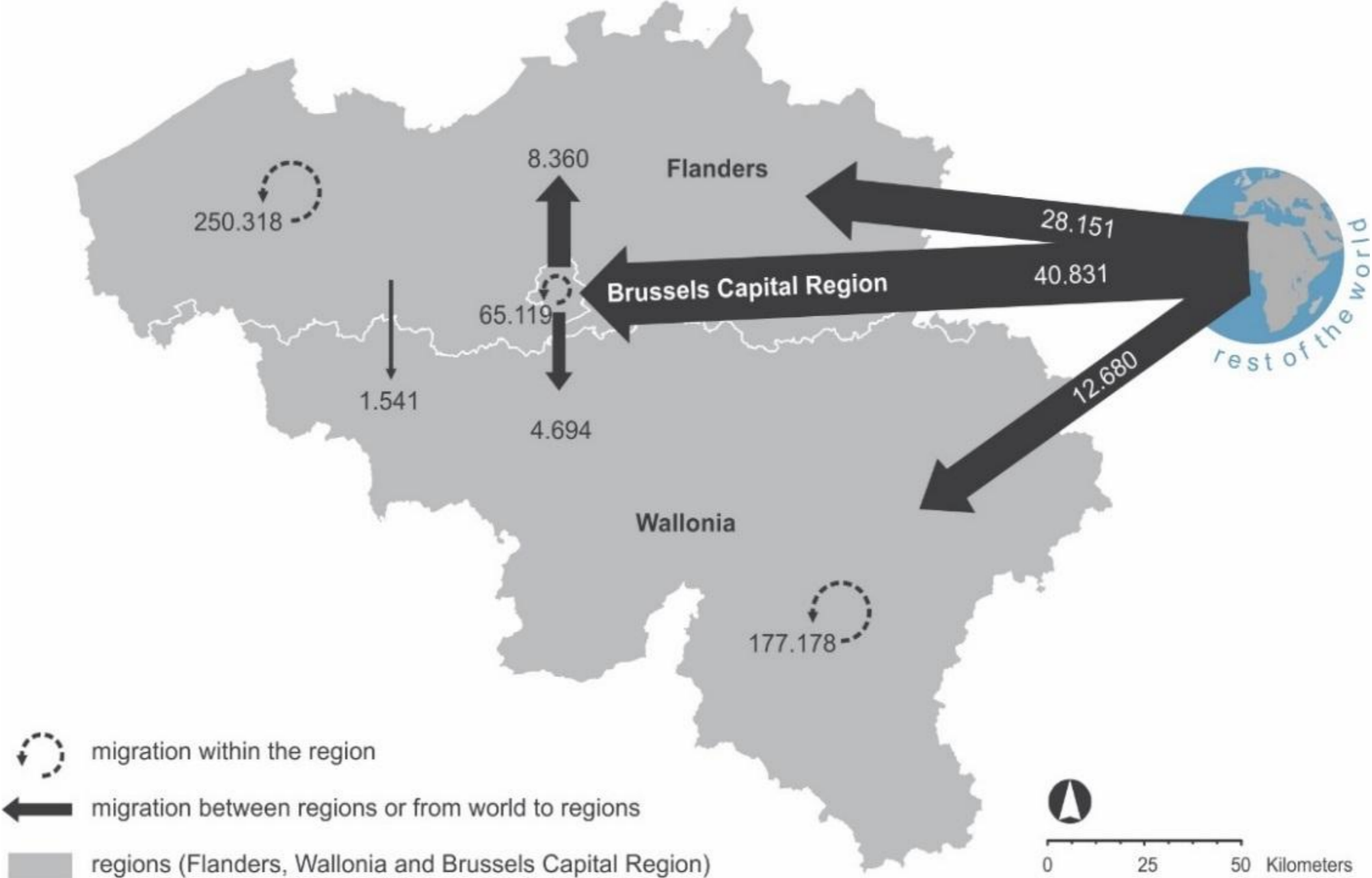
BELGIUM IN BRIEF

- 3 regions: Flanders, Wallonia, and the Brussels Capital Region
- Spatial planning is a regional competence
 - focus on Flanders

MIGRATION

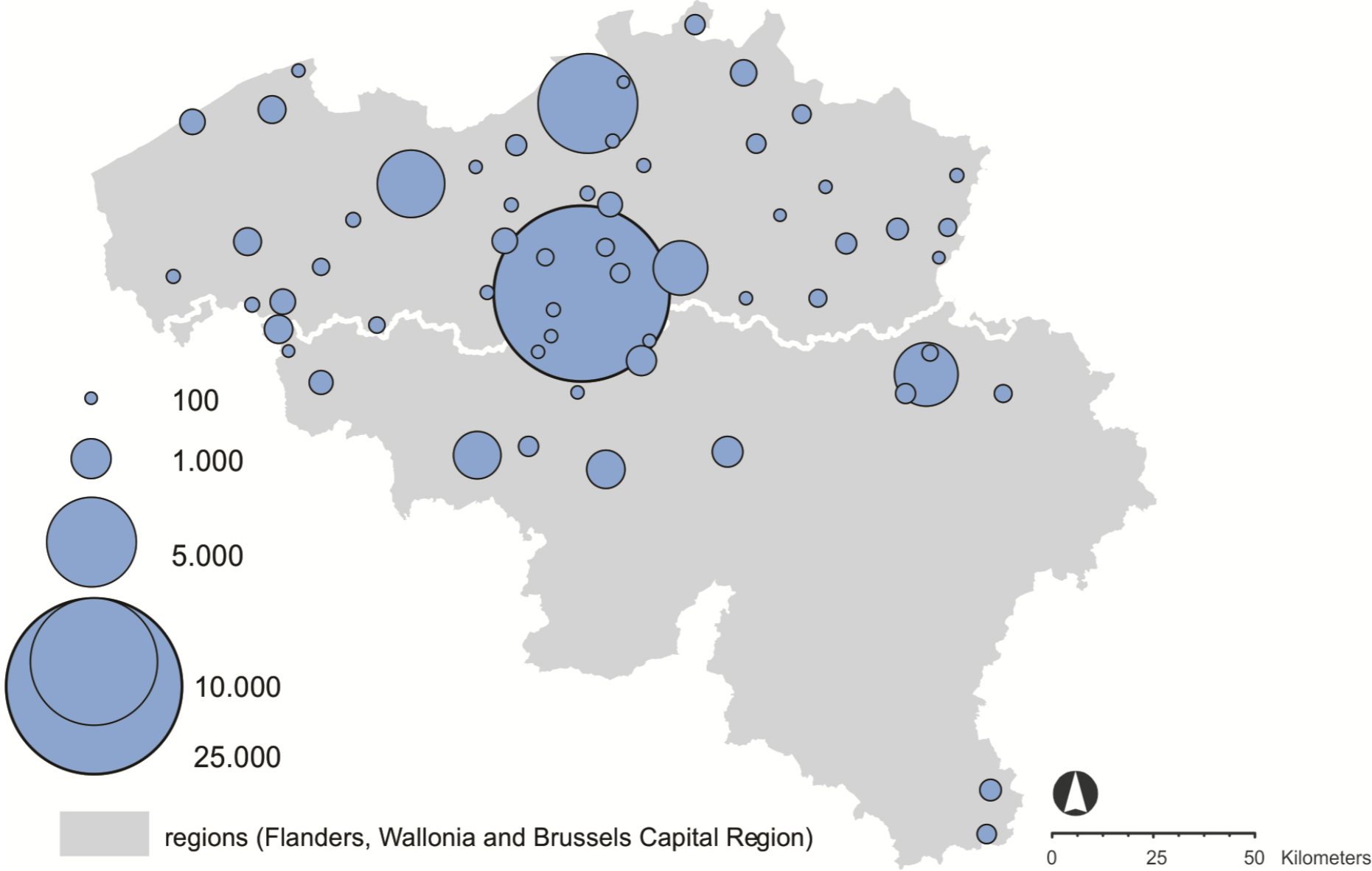
EXTERNAL MIGRATION

Netto influx



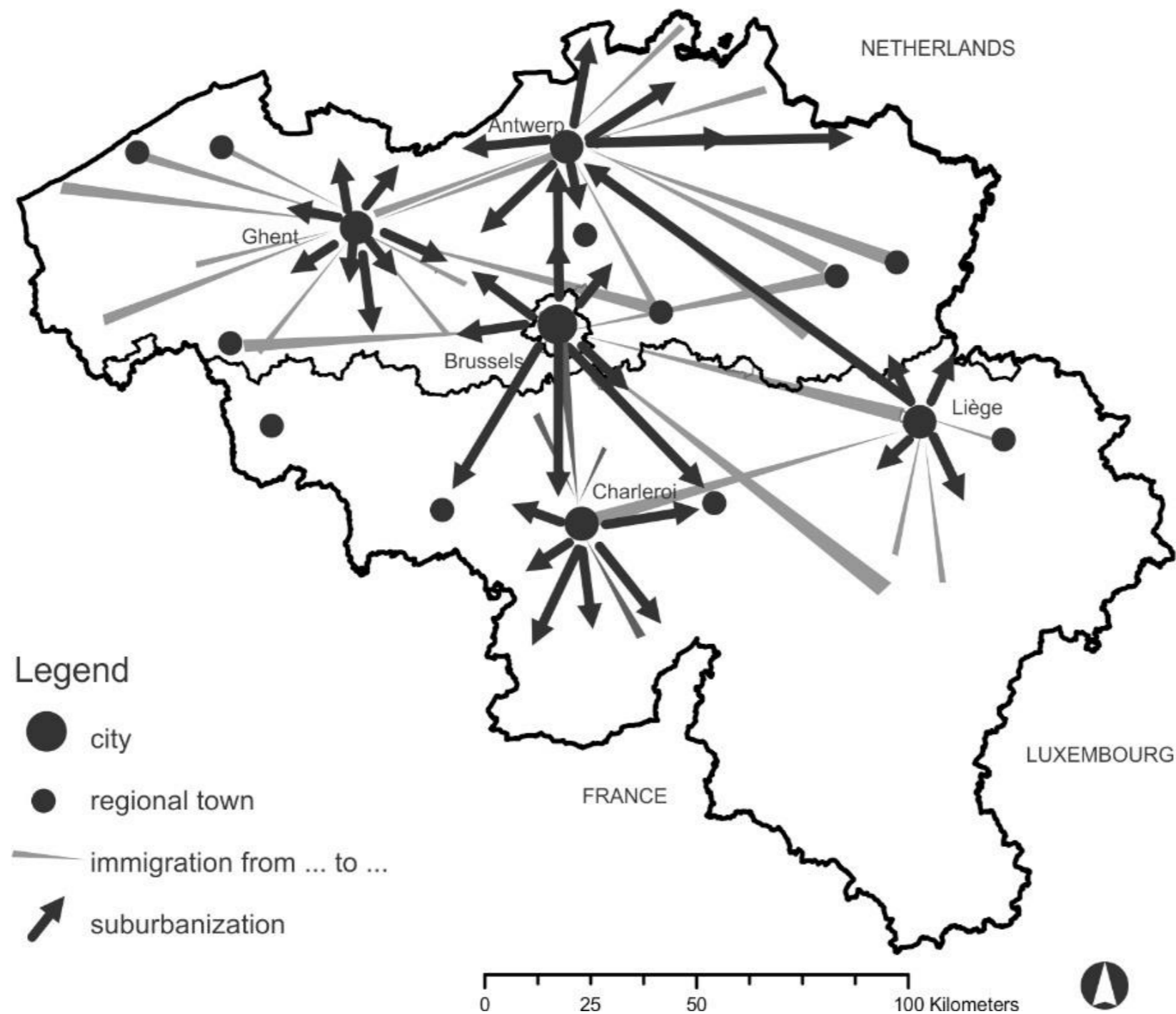
EXTERNAL MIGRATION

To major cities



Saldo of external migration in the Belgium, in absolute numbers in 2015. Only numbers above 100 are displayed.
Source: Processed data from the Flanders Government - Research Centre Flanders (2016).

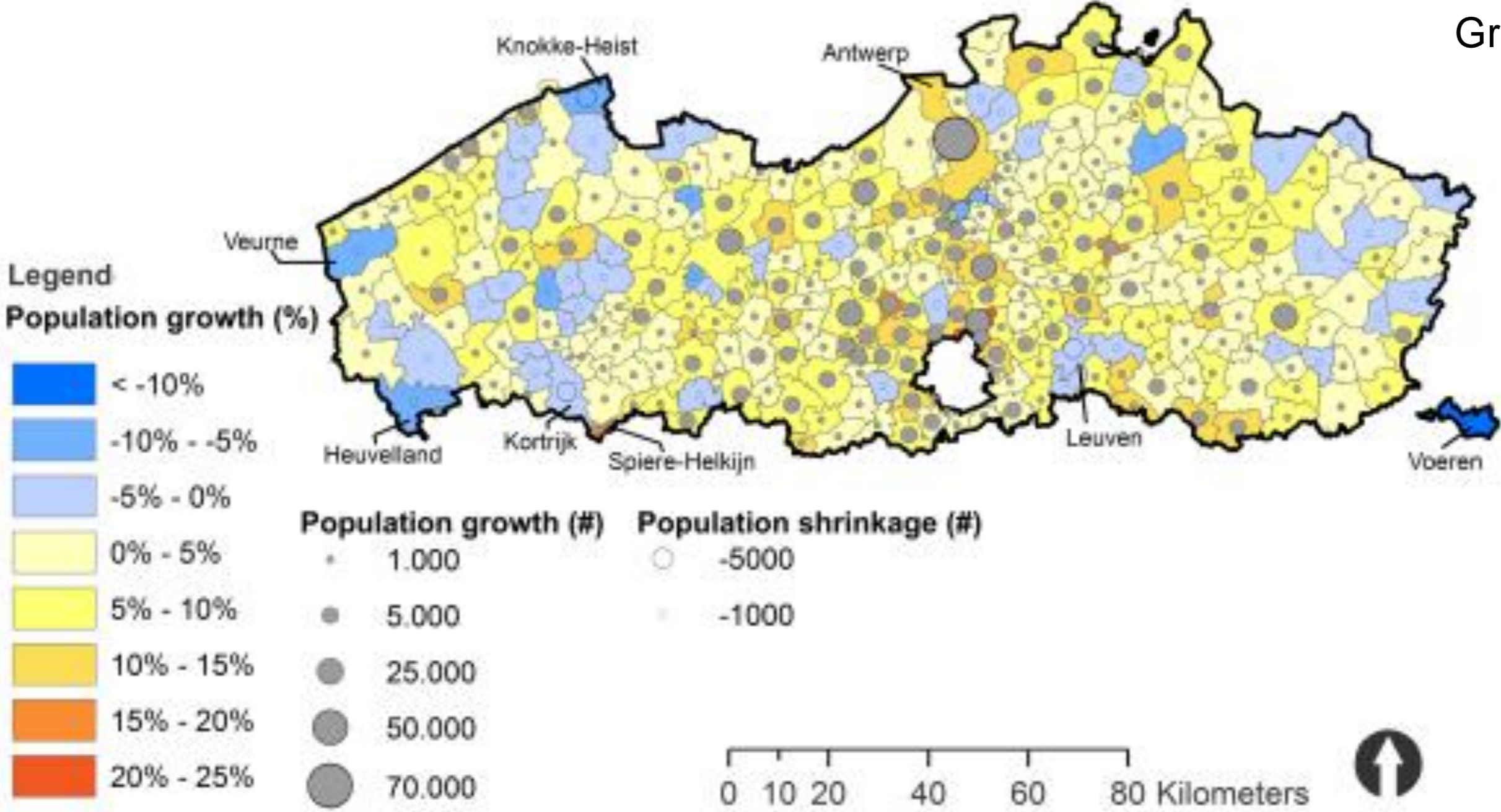
INTERNAL MIGRATION



From city to suburbs

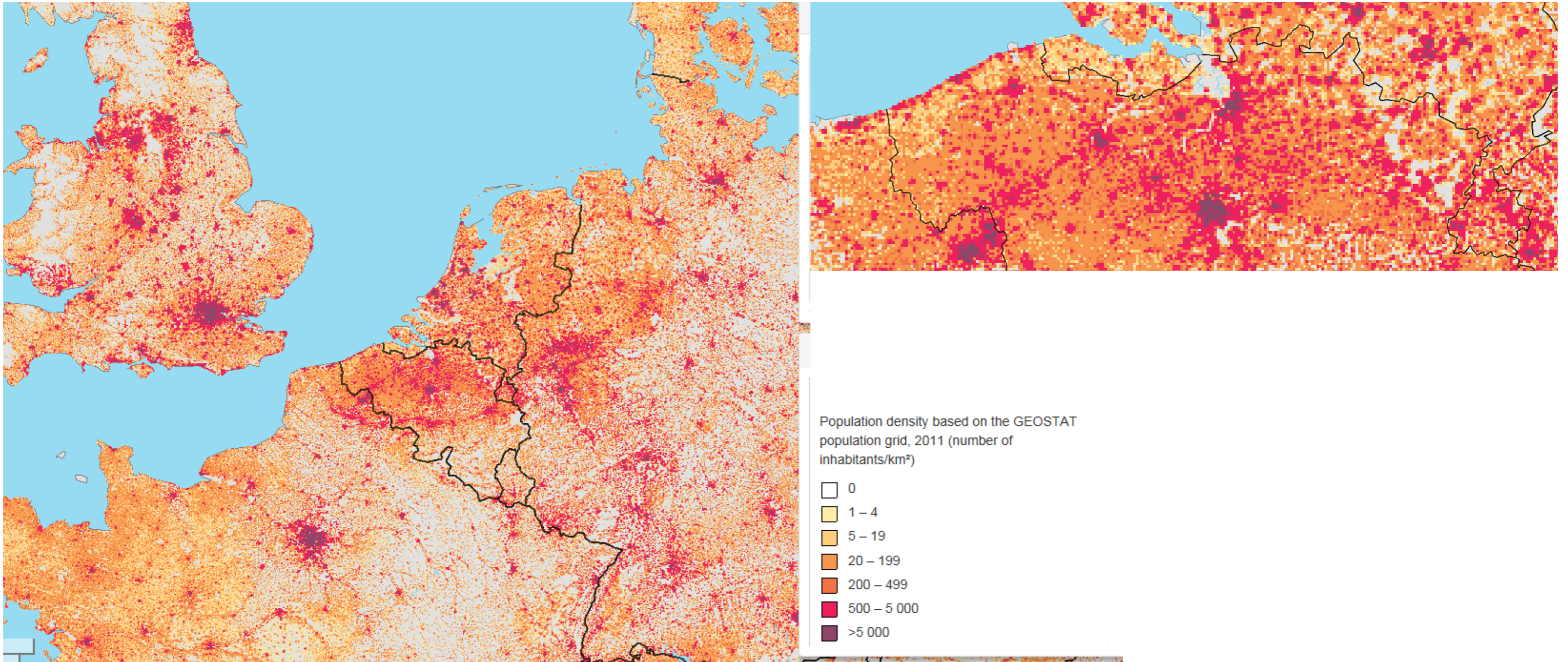
POPULATION FORECASTS

Growth and shrinkage



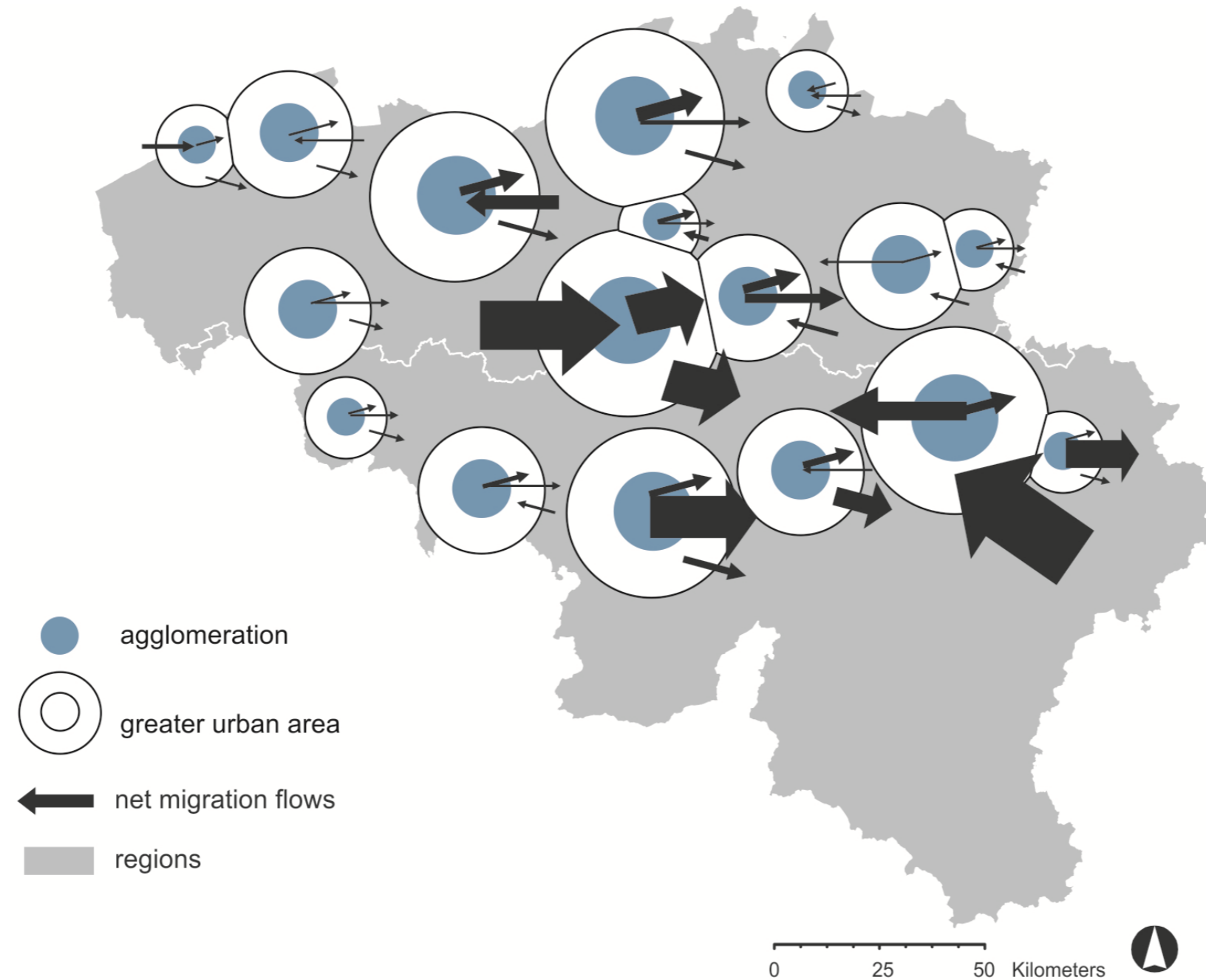
SUBURBANIZATION

SPRAWL



SPRAWL

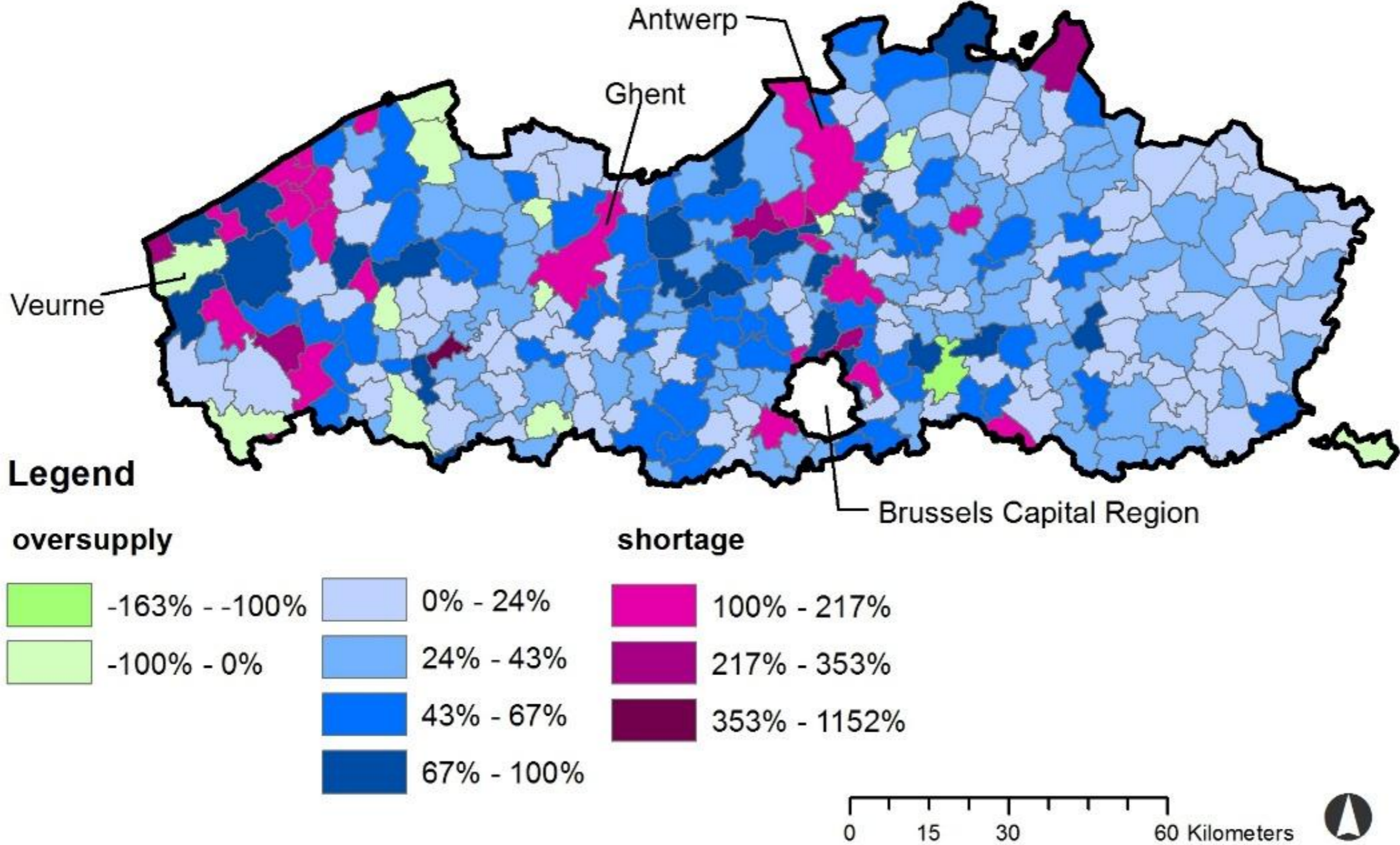
From city centre to suburbs



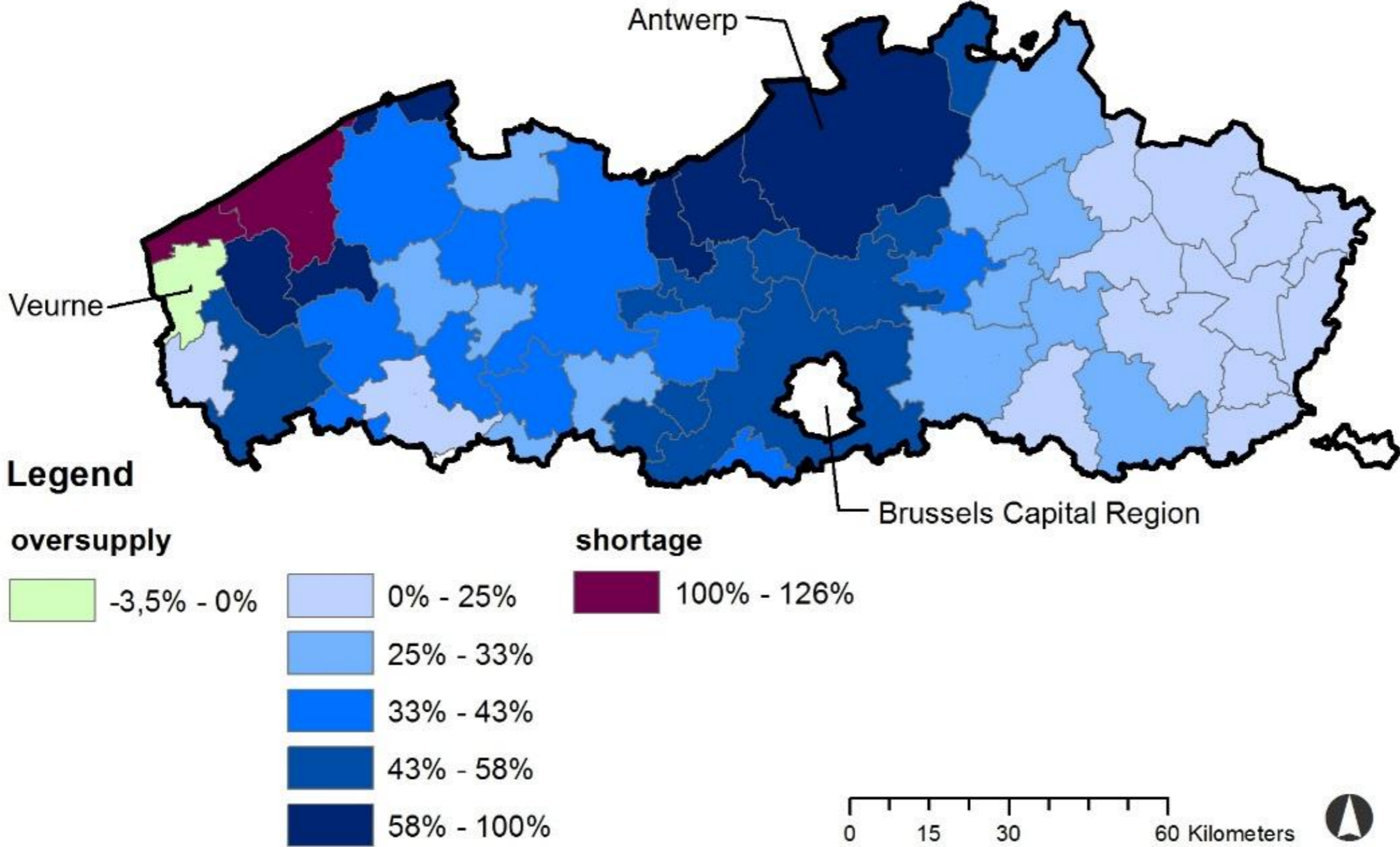
Net internal migration flows to and from the Belgium agglomerations, numbers in 2015.
Source: Processed data from the Flanders Government - Research Centre Flanders (2016).

HOUSING PRESSURE

Local phenomenon



HOUSING MARKET AREAS



Oversupply?

POLICY RESPONNS

CULTURE VS. SPATIAL POLICY

- Oversupply on building plots
- Building culture in Belgium/Flanders: detached homes
- Policy:
 - restrict supply
 - TOD (transport oriented development)
 - a territorial policy is needed to differentiate spatial policy between rural and urban areas

Isabelle Loris
Ann Pisman

CENTER FOR MOBILITY AND SPATIAL PLANNING

E isabelle.loris@ugent.be

T +32 9 331 32 51

M +32 496 56 72 43

www.planning.ugent.be

 Ghent University

 @ugent

 Ghent University